

A minimalist, monochromatic photograph. On the left side, a large, curved, light-colored object, possibly a piece of furniture or a wall, curves into the frame. In the foreground, two rolled-up items, likely towels or blankets, are placed on a light-colored floor. The background is a plain, light-colored wall. The overall aesthetic is clean and modern.

BOON_EDITIONS

PRODUCT CATALOGUE | EDITIONS N° 1 BY PIETER MAES

BOON_EDITIONS

Dear Client,

BOON_EDITIONS are pleased to introduce you to our unique product universe, the precision, distinct perfection of our designers and craftsmen shaping the profound uniqueness of all the products in the BOON_EDITIONS catalogue, designed by our carefully selected designers, and edited by Kristofer Kongshaug, founder, and creative director, and produced of BOON_EDITIONS.

We encourage you to read the price list and conditions that regulate the commercial relationship between the Parties.

BOON_EDITIONS takes great pride in the excellence of the design and quality of our products. We have built a network of the best producers and craftsmen within our field, to the highest standards of craftsmanship in Italy, France, Belgium, and Georgia.

BOON_EDITIONS collections are divided numbered collections by a selected designer, each collection consists of two categories:

1. *Unique or limited-edition pieces, functional design, or Pièce de Arts*
2. *Open editions: our permanent collections, made on order, with the option of sur-measure on request.*

All BOON_EDITIONS products are fully and/or partly crafted by hand, small differences in the finishes, small irregularities such are not to be considered defects, but a natural part of the BOON_EDITIONS craftsmanship and design aesthetics and as an added value to the product itself, making each product more distinctive and adding value to Product. Raw materials such as wood, fabric, leather, stone, and metals will always have a life on its own, hence colours and patterns in the materials might slightly differ from the images in this catalogue to product delivered. Hence remarks and complaints related to such aspects will not be considered for any reclamation by BOON_EDITIONS SAS.

Please pay attention to the product sheets of each product to ensure the right care in assembly and maintenance over time. **Terms and Conditions** in the end of the catalogue on page 130.



09

ABOUT

12

OPEN EDITIONS

STRATA

TWO SEATER SOFA
TWO SEATER SOFA DEEP

THREE SEATER SOFA
THREE SEATER SOFA DEEEP

KINK

SOFA
SOFA DEEP

MERIDIENNE

SOFA
SOFA DEEP

RUBENS

ARMCHAIR
SOFA

32

LIMITED EDITIONS

STRATA

TABLE

NIKI

STOOL

STANZA

CHAIR

40

FABRIC & LEATHER SELECTION

AVAILABLE OPTIONS

130

TERMS & CONDITIONS

SALES & DELIVERIES

134

CONTACT

CONTACT & INFORMATION







ABOUT BOON_EDITIONS N°1

BOON_EDITIONS gives its designers a platform with endless opportunities for an unrestricted freedom to create with no limitation. Melding architectural influences and curved lines, the first BOON_EDITIONS collaboration is designed by Antwerp designer **Pieter Maes**. A collection of elegance and softness. How form follows feeling.

The collection includes marble furniture and seatings with soft sculptural shapes, elegant materials and unexpected details. These designs are somehow both sharp and curvy, eye-catching and playful. A creation of emotional connections that experiments with the boundaries between art and design putting the undulating silhouettes to decorative use offering an enticing prospect: comfort. Simple and bold movements that balance the inner force of upholstery with the exterior force of gravity that interacts with the surrounding through their organic shapes and strong expression.

Pieter Maes's aesthetic is about the power of pure forms that transcend time. Influenced by human history that has never been written down and remains undocumented, artifacts that suggest a distant past or a potential future; Aeon Prox.



STRATA TWO SEATER

PRODUCT FACT SHEET

PRODUCT TYPE

Sofa / Seating / Indoor

YEAR & EDITION

2021, EDITION N° 1 Aeon Prox by Pieter Maes

DIMENSIONS

H 75 L 179 D 151 cm

SEAT DIMENSIONS

H 44 D 77 cm

WEIGHT

95 kg

MATERIALS

Carbon offset production - *Made in Italy*
Internal structure in solid wood

RETAIL PRICE Ex Works

LEATHERS

KAIROS	€ 15 920
SEQUOIA	€ 13 280
ORGANIC	€ 14 160

BOUCLÉ

LOUISON	€ 27 600
AGNES	€ 26 930
SOLANGE	€ 20 310
ELLE	€ 13 170
JUDITH	€ 17 960

WOOLS

VIDAR 4	€ 13 840
---------	----------

VELVETS & VELOURS

BOLD	€ 23 240
TEDDY MOHAIR	€ 22 850
BYRAM	€ 18 110
GENTLE 2	€ 14 560
EINAR	€ 20 510

PLAINS

CIFRADO	€ 13 020
MOSS	€ 12 080
NARA	€ 13 350
BASILE	€ 13 880
SONAR 3	€ 16 070

C.O.M. No Cover € 13 320



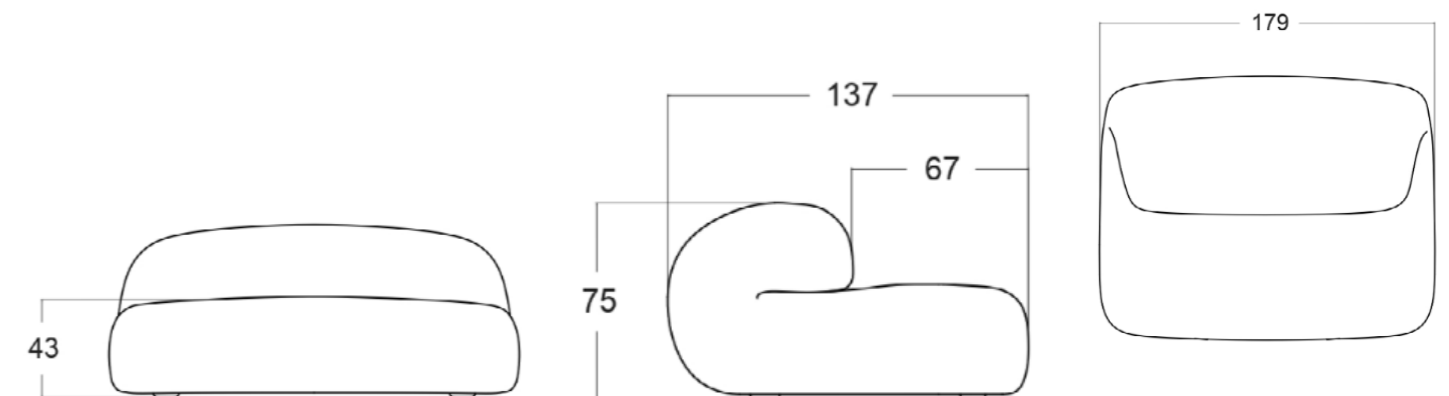
C.O.M.*prices do not include fabric costs for the upholstery. Fabric meters are referred to plain fabric, h 140 cm. For striped, patterned fabrics or leather, please ask for meters required. Our furniture is not fireproof. For C.O.M., possibility to request fireproof foam on request (1 IM, California TB 117, British Standard). Timing and costs to be confirmed.

BOON_EDITIONS SAS reserves the right, at its discretion, to insert the piping at the seams where necessary to guarantee the quality of the finished product.

*customer's own material

1 please refer to fabric chart at the end of the price list

2 please refer to color chart at the end of the pricelist for color choice



STRATA TWO SEATER DEEP

PRODUCT FACT SHEET

PRODUCT TYPE

Sofa / Seating / Indoor

YEAR & EDITION

2021, EDITION N° 1 Aeon Prox by Pieter Maes

DIMENSIONS

H 75 L 179 D 151 cm

SEAT DIMENSIONS

H 44 D 77 cm

WEIGHT

95 kg

MATERIALS

Carbon offset production - *Made in Italy*
Internal structure in solid wood

RETAIL PRICE Ex Works

LEATHERS

KAIROS	€ 19 600
SEQUOIA	€ 16 240
ORGANIC	€ 17 360

BOUCLÉ

LOUISON	€ 32 490
AGNES	€ 31 700
SOLANGE	€ 23 970
ELLE	€ 15 650
JUDITH	€ 21 230

WOOLS

VIDAR 4	€ 16 420
---------	----------

VELVETS & VELOURS

BOLD	€ 27 390
TEDDY MOHAIR	€ 26 940
BYRAM	€ 21 410
GENTLE 2	€ 17 260
EINAR	€ 24 210

PLAINS

CIFRADO	€ 15 460
MOSS	€ 14 370
NARA	€ 15 860
BASILE	€ 16 470
SONAR 3	€ 19 020

C.O.M. No Cover € 15 960



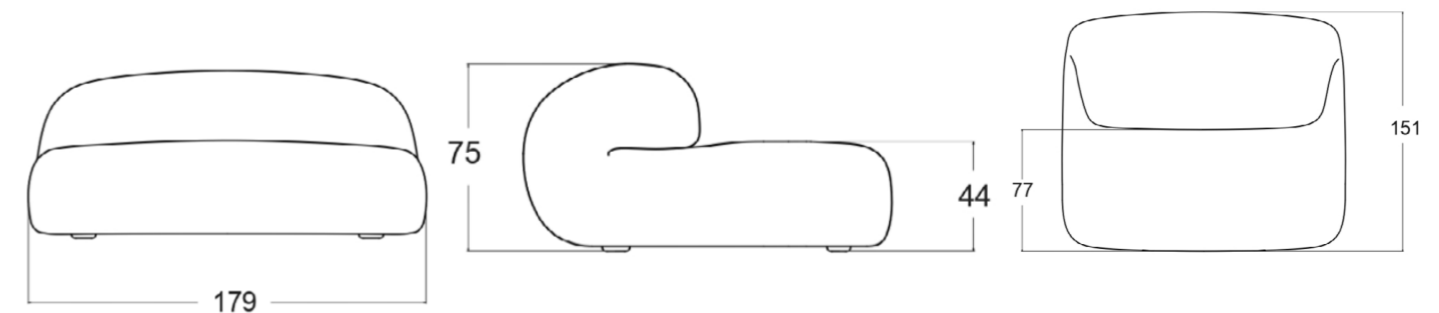
C.O.M.* prices do not include fabric costs for the upholstery. Fabric meters are referred to plain fabric, h 140 cm. For striped, patterned fabrics or leather, please ask for meters required. Our furniture is not fireproof. For C.O.M., possibility to request fireproof foam on request (1 IM, California TB 117, British Standard). Timing and costs to be confirmed.

BOON_EDITIONS SAS reserves the right, at its discretion, to insert the piping at the seams where necessary to guarantee the quality of the finished product.

* customer's own material

1 please refer to fabric chart at the end of the price list

2 please refer to color chart at the end of the pricelist for color choice



STRATA THREE SEATER

PRODUCT FACT SHEET

PRODUCT TYPE

Sofa / Seating / Indoor

YEAR & EDITION

2021, EDITION N° 1 Aeon Prox by Pieter Maes

DIMENSIONS

H 75 L 250 D 137 cm

SEAT DIMENSIONS

H 43 D 67 cm

WEIGHT

125 kg

MATERIALS

Carbon offset production - *Made in Italy*
Internal structure in solid wood

RETAIL PRICE Ex Works

LEATHERS

KAIROS	€ 30 640
SEQUOIA	€ 24 640
ORGANIC	€ 26 640

BOUCLÉ

LOUISON	€ 36 480
AGNES	€ 35 700
SOLANGE	€ 27 970
ELLE	€ 19 650
JUDITH	€ 25 230

WOOLS

VIDAR 4	€ 20 420
---------	----------

VELVETS & VELOURS

BOLD	€ 31 390
TEDDY MOHAIR	€ 30 940
BYRAM	€ 25 410
GENTLE 2	€ 21 260
EINAR	€ 28 210

PLAINS

CIFRADO	€ 19 460
MOSS	€ 18 370
NARA	€ 19 860
BASILE	€ 20 470
SONAR 3	€ 23 020

C.O.M. No Cover € 21 960



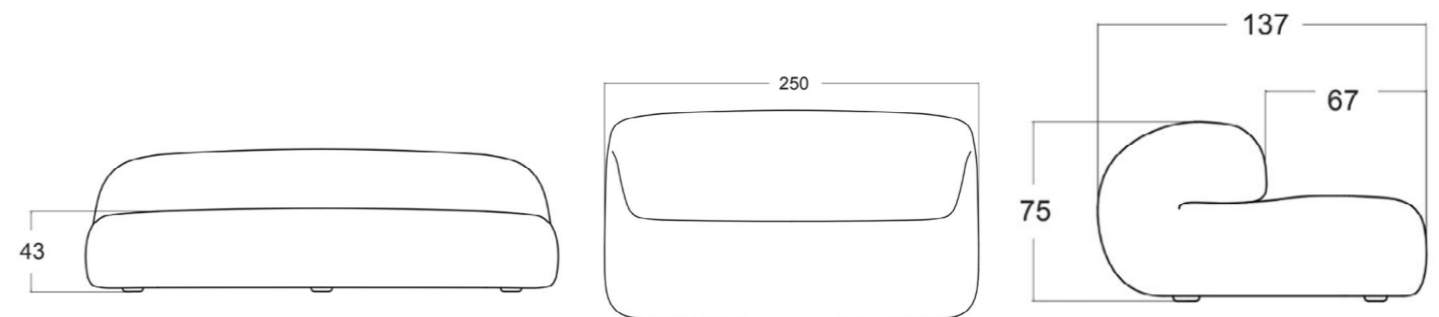
C.O.M.* prices do not include fabric costs for the upholstery. Fabric meters are referred to plain fabric, h 140 cm. For striped, patterned fabrics or leather, please ask for meters required. Our furniture is not fireproof. For C.O.M., possibility to request fireproof foam on request (1 IM, California TB 117, British Standard). Timing and costs to be confirmed.

BOON_EDITIONS SAS reserves the right, at its discretion, to insert the piping at the seams where necessary to guarantee the quality of the finished product.

* customer's own material

1 please refer to fabric chart at the end of the price list

2 please refer to color chart at the end of the pricelist for color choice



STRATA THREE SEATER DEEP

PRODUCT FACT SHEET

PRODUCT TYPE

Sofa / Seating / Indoor

YEAR & EDITION

2021, EDITION N° 1 Aeon Prox by Pieter Maes

DIMENSIONS

H 75 L 250 D 151 cm

SEAT DIMENSIONS

H 44 D 77 cm

WEIGHT

140 kg

MATERIALS

Carbon offset production - *Made in Italy*
Internal structure in solid wood

RETAIL PRICE Ex Works

LEATHERS

KAIROS	€ 35 280
SEQUOIA	€ 28 080
ORGANIC	€ 30 480

BOUCLÉ

LOUISON	€ 41 040
AGNES	€ 40 150
SOLANGE	€ 31 320
ELLE	€ 21 800
JUDITH	€ 28 180

WOOLS

VIDAR 4	€ 22 690
---------	----------

VELVETS & VELOURS

BOLD	€ 35 220
TEDDY MOHAIR	€ 34 710
BYRAM	€ 28 390
GENTLE 2	€ 23 650
EINAR	€ 31 590

PLAINS

CIFRADO	€ 21 590
MOSS	€ 20 340
NARA	€ 22 040
BASILE	€ 22 740
SONAR 3	€ 25 660

C.O.M. No Cover € 24 120



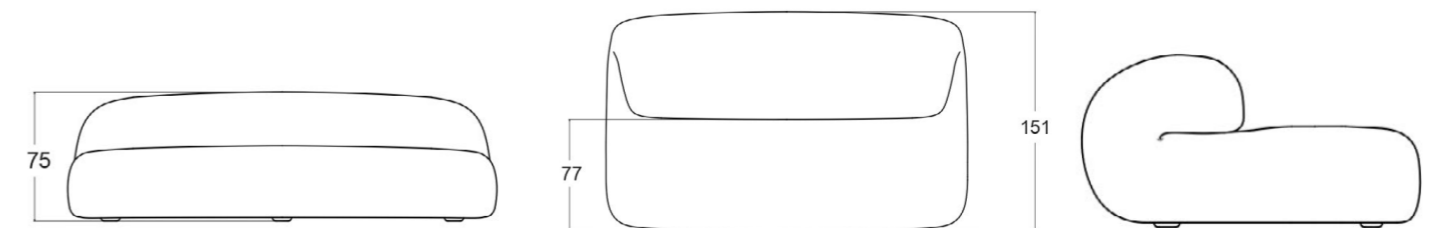
C.O.M.*prices do not include fabric costs for the upholstery. Fabric meters are referred to plain fabric, h 140 cm. For striped, patterned fabrics or leather, please ask for meters required. Our furniture is not fireproof. For C.O.M., possibility to request fireproof foam on request (1 IM, California TB 117, British Standard). Timing and costs to be confirmed.

BOON_EDITIONS SAS reserves the right, at its discretion, to insert the piping at the seams where necessary to guarantee the quality of the finished product.

*customer's own material

1 please refer to fabric chart at the end of the price list

2 please refer to color chart at the end of the pricelist for color choice



STRATA KINK

PRODUCT FACT SHEET

PRODUCT TYPE

Sofa / Seating / Indoor

YEAR & EDITION

2021, EDITION N° 1 Aeon Prox by Pieter Maes

DIMENSIONS

H 72 L 336.5 D 133.6 cm

SEAT DIMENSIONS

H 40 D 62.5 cm

WEIGHT

190 kg

MATERIALS

Carbon offset production - *Made in Italy*
Internal structure in solid wood

RETAIL PRICE Ex Works

LEATHERS

KAIROS	€ 34 640
SEQUOIA	€ 28 040
ORGANIC	€ 30 240

BOUCLÉ

LOUISON	€ 42 000
AGNES	€ 41 110
SOLANGE	€ 32 280
ELLE	€ 22 760
JUDITH	€ 29 140

WOOLS

VIDAR 4	€ 23 650
---------	----------

VELVETS & VELOURS

BOLD	€ 36 180
TEDDY MOHAIR	€ 35 670
BYRAM	€ 29 350
GENTLE 2	€ 24 610
EINAR	€ 32 550

PLAINS

CIFRADO	€ 22 550
MOSS	€ 21 300
NARA	€ 23 000
BASILE	€ 23 700
SONAR 3	€ 26 620

C.O.M. No Cover € 25 560



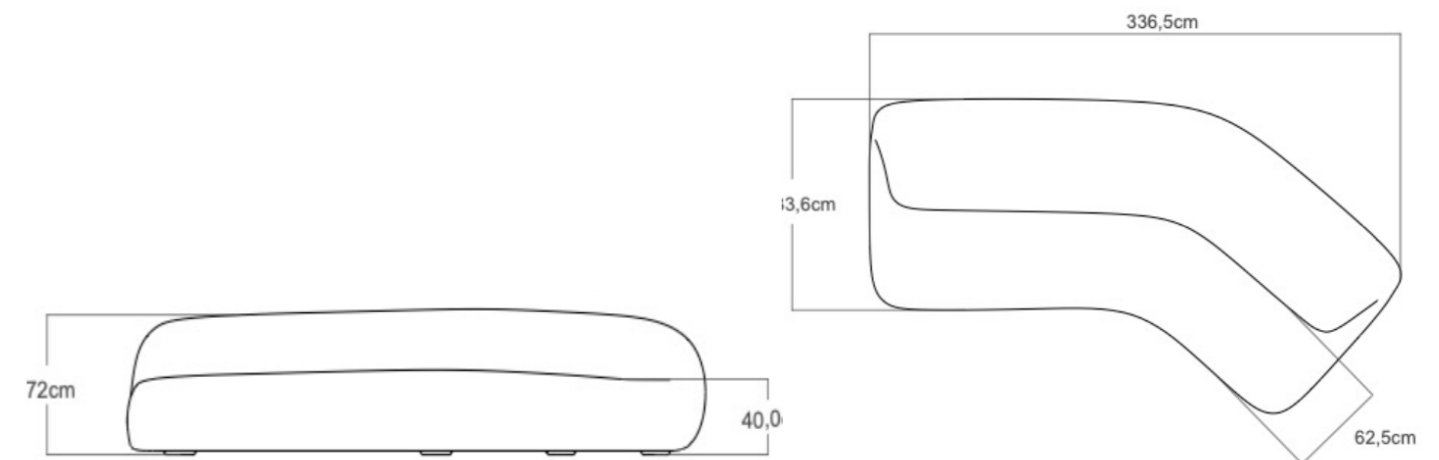
C.O.M.* prices do not include fabric costs for the upholstery. Fabric meters are referred to plain fabric, h 140 cm. For striped, patterned fabrics or leather, please ask for meters required. Our furniture is not fireproof. For C.O.M., possibility to request fireproof foam on request (1 IM, California TB 117, British Standard). Timing and costs to be confirmed.

BOON_EDITIONS SAS reserves the right, at its discretion, to insert the piping at the seams where necessary to guarantee the quality of the finished product.

* customer's own material

1 please refer to fabric chart at the end of the price list

2 please refer to color chart at the end of the pricelist for color choice



STRATA KINK DEEP

PRODUCT FACT SHEET

PRODUCT TYPE

Sofa / Seating / Indoor

YEAR & EDITION

2021, EDITION N° 1 Aeon Prox by Pieter Maes

DIMENSIONS

H 75 L 337 D 144 cm

SEAT DIMENSIONS

H 43 D 73 cm

WEIGHT

210 kg

MATERIALS

Carbon offset production - *Made in Italy*
Internal structure in solid wood

RETAIL PRICE Ex Works

LEATHERS

KAIROS	€ 39 560
SEQUOIA	€ 31 760
ORGANIC	€ 34 360

BOUCLÉ

LOUISON	€ 46 840
AGNES	€ 45 840
SOLANGE	€ 35 900
ELLE	€ 25 200
JUDITH	€ 32 370

WOOLS

VIDAR 4	€ 26 190
---------	----------

VELVETS & VELOURS

BOLD	€ 40 290
TEDDY MOHAIR	€ 39 720
BYRAM	€ 32 610
GENTLE 2	€ 27 280
EINAR	€ 36 210

PLAINS

CIFRADO	€ 24 960
MOSS	€ 23 550
NARA	€ 25 460
BASILE	€ 26 250
SONAR 3	€ 29 540

C.O.M. No Cover € 28 140



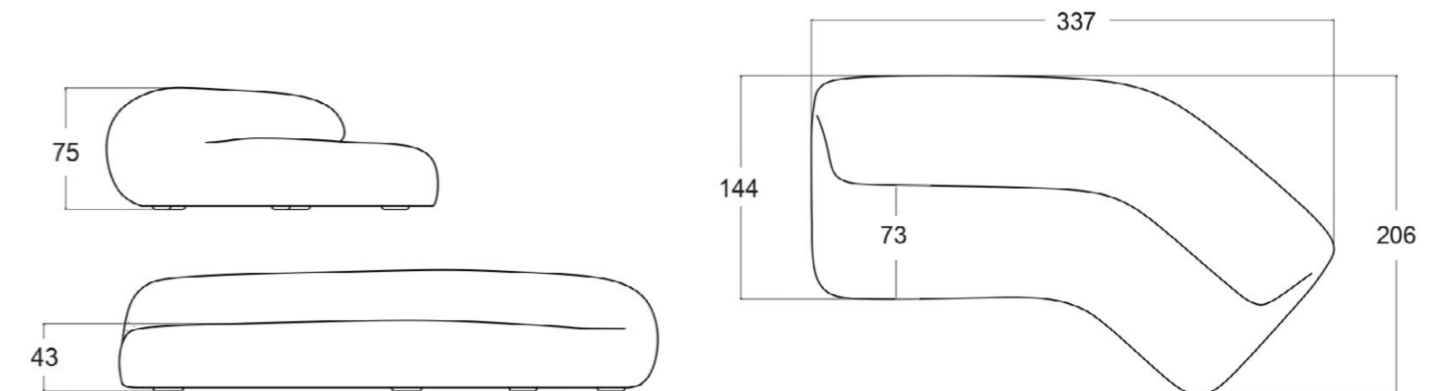
C.O.M.*prices do not include fabric costs for the upholstery. Fabric meters are referred to plain fabric, h 140 cm. For striped, patterned fabrics or leather, please ask for meters required. Our furniture is not fireproof. For C.O.M., possibility to request fireproof foam on request (1 IM, California TB 117, British Standard). Timing and costs to be confirmed.

BOON_EDITIONS SAS reserves the right, at its discretion, to insert the piping at the seams where necessary to guarantee the quality of the finished product.

*customer's own material

1 please refer to fabric chart at the end of the price list

2 please refer to color chart at the end of the pricelist for color choice



STRATA MERIDIENNE

PRODUCT FACT SHEET

PRODUCT TYPE

Sofa / Seating / Indoor

YEAR & EDITION

2021, EDITION N° 1 Aeon Prox by Pieter Maes

DIMENSIONS

H 72 L 308 D 135 cm

SEAT DIMENSIONS

H 43 D 67 cm

WEIGHT

190 kg

MATERIALS

Carbon offset production - *Made in Italy*
Internal structure in solid wood

RETAIL PRICE Ex Works

LEATHERS

KAIROS	€ 39 520
SEQUOIA	€ 34 000
ORGANIC	€ 35 840

BOUCLÉ

LOUISON	€ 49 760
AGNES	€ 48 870
SOLANGE	€ 40 040
ELLE	€ 30 520
JUDITH	€ 36 900

WOOLS

VIDAR 4	€ 31 410
---------	----------

VELVETS & VELOURS

BOLD	€ 43 940
TEDDY MOHAIR	€ 43 430
BYRAM	€ 37 110
GENTLE 2	€ 32 370
EINAR	€ 40 310

PLAINS

CIFRADO	€ 30 310
MOSS	€ 29 060
NARA	€ 30 760
BASILE	€ 31 460
SONAR 3	€ 34 380

C.O.M. No Cover	€ 37 200
-----------------	----------



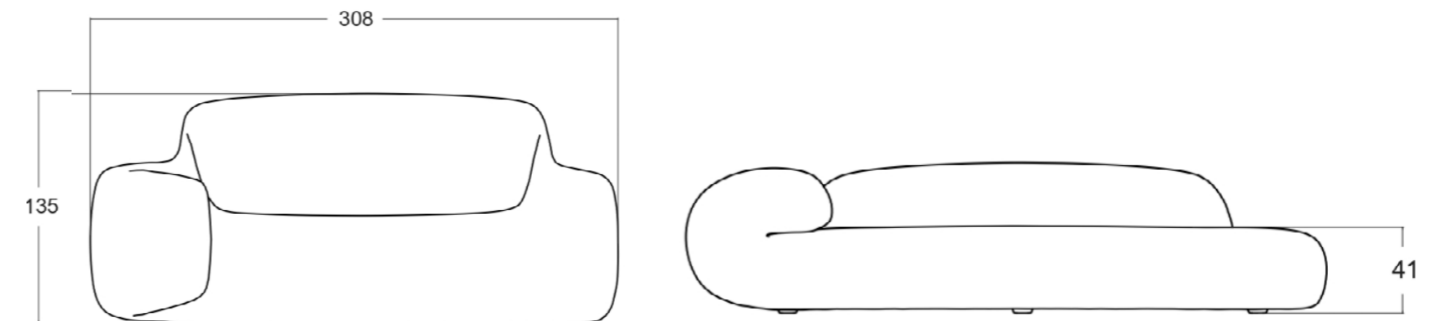
C.O.M.* prices do not include fabric costs for the upholstery. Fabric meters are referred to plain fabric, h 140 cm. For striped, patterned fabrics or leather, please ask for meters required. Our furniture is not fireproof. For C.O.M., possibility to request fireproof foam on request (1 IM, California TB 117, British Standard). Timing and costs to be confirmed.

BOON_EDITIONS SAS reserves the right, at its discretion, to insert the piping at the seams where necessary to guarantee the quality of the finished product.

* customer's own material

1 please refer to fabric chart at the end of the price list

2 please refer to color chart at the end of the pricelist for color choice



STRATA MERIDIENNE DEEP

PRODUCT FACT SHEET

PRODUCT TYPE

Sofa / Seating / Indoor

YEAR & EDITION

2021, EDITION N° 1 Aeon Prox by Pieter Maes

DIMENSIONS

H 72 L 308 D 145 cm

SEAT DIMENSIONS

H 44 D 77 cm

WEIGHT

210 kg

MATERIALS

Carbon offset production - *Made in Italy*
Internal structure in solid wood

RETAIL PRICE Ex Works

LEATHERS

KAIROS	€ 44 880
SEQUOIA	€ 38 280
ORGANIC	€ 40 480

BOUCLÉ

LOUISON	€ 55 360
AGNES	€ 54 360
SOLANGE	€ 44 420
ELLE	€ 33 720
JUDITH	€ 40 890

WOOLS

VIDAR 4	€ 34 710
---------	----------

VELVETS & VELOURS

BOLD	€ 48 810
TEDDY MOHAIR	€ 48 240
BYRAM	€ 41 130
GENTLE 2	€ 35 800
EINAR	€ 44 730

PLAINS

CIFRADO	€ 33 480
MOSS	€ 32 070
NARA	€ 33 980
BASILE	€ 34 770
SONAR 3	€ 38 060

C.O.M. No Cover € 40 920



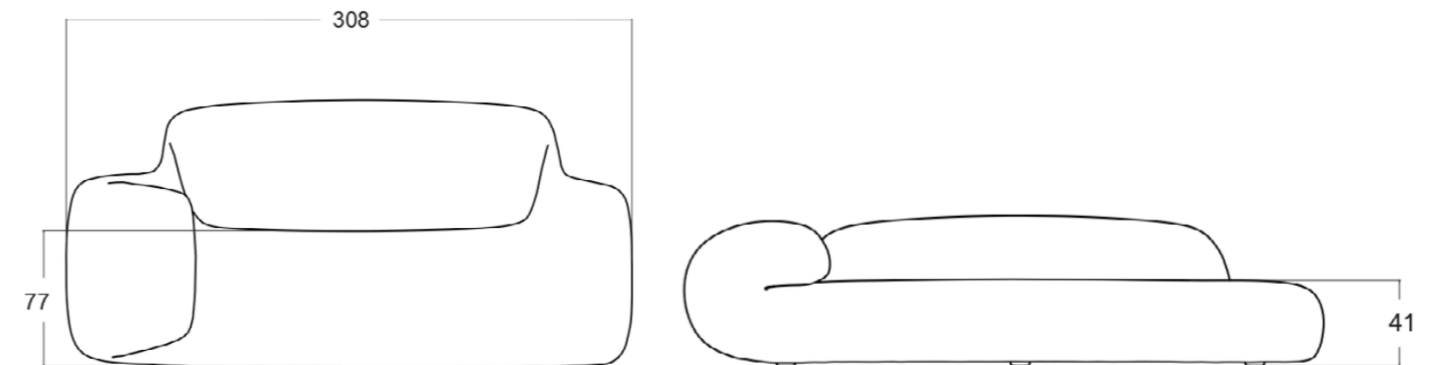
C.O.M.*prices do not include fabric costs for the upholstery. Fabric meters are referred to plain fabric, h 140 cm. For striped, patterned fabrics or leather, please ask for meters required. Our furniture is not fireproof. For C.O.M., possibility to request fireproof foam on request (1 IM, California TB 117, British Standard). Timing and costs to be confirmed.

BOON_EDITIONS SAS reserves the right, at its discretion, to insert the piping at the seams where necessary to guarantee the quality of the finished product.

*customer's own material

1 please refer to fabric chart at the end of the price list

2 please refer to color chart at the end of the pricelist for color choice



RUBENS ARMCHAIR

PRODUCT FACT SHEET

PRODUCT TYPE

Armchair / Seating / Indoor

YEAR & EDITION

2021, EDITION N° 1 Aeon Prox by Pieter Maes

DIMENSIONS

H 71 L 108 D 93 cm

SEAT DIMENSIONS

H 44 D 62 cm

WEIGHT

35 kg

MATERIALS

Carbon offset production - *Made in Italy*
Internal structure in solid wood

RETAIL PRICE Ex Works

LEATHERS

KAIROS	€ 15 440
SEQUOIA	€ 12 800
ORGANIC	€ 13 680

BOUCLÉ

LOUISON	€ 27 120
AGNES	€ 26 450
SOLANGE	€ 19 830
ELLE	€ 12 690
JUDITH	€ 17 480

WOOLS

VIDAR 4	€ 13 360
---------	----------

VELVETS & VELOURS

BOLD	€ 22 760
TEDDY MOHAIR	€ 22 370
BYRAM	€ 17 630
GENTLE 2	€ 14 080
VIGGO	€ 16 520
EINAR	€ 20 030

PLAINS

PULP	€ 11 380
CIFRADO	€ 12 540
MOSS	€ 11 600
NARA	€ 12 870
BASILE	€ 13 400
SONAR 3	€ 15 590

C.O.M. No Cover € 12 600



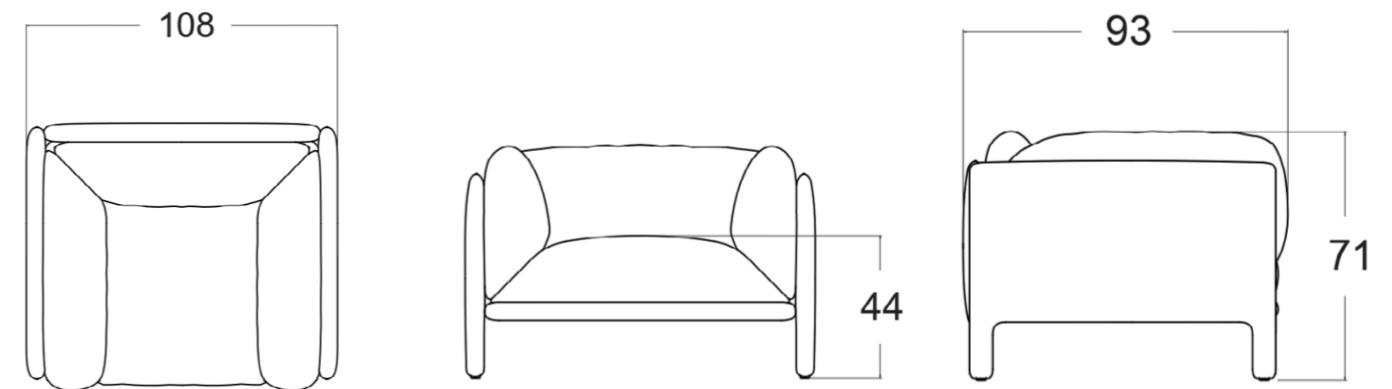
C.O.M.*prices do not include fabric costs for the upholstery. Fabric meters are referred to plain fabric, h 140 cm. For striped, patterned fabrics or leather, please ask for meters required. Our furniture is not fireproof. For C.O.M., possibility to request fireproof foam on request (1 IM, California TB 117, British Standard). Timing and costs to be confirmed.

BOON_EDITIONS SAS reserves the right, at its discretion, to insert the piping at the seams where necessary to guarantee the quality of the finished product.

* customer's own material

1 please refer to fabric chart at the end of the price list

2 please refer to color chart at the end of the pricelist for color choice



RUBENS SOFA

PRODUCT FACT SHEET

PRODUCT TYPE

Sofa / Seating / Indoor

YEAR & EDITION

2021, EDITION N° 1 Aeon Prox by Pieter Maes

DIMENSIONS

H 71 L 224 D 87 cm

SEAT DIMENSIONS

H 43 D 64 cm

WEIGHT

70 kg

MATERIALS

Carbon offset production - *Made in Italy*
Internal structure in solid wood

RETAIL PRICE Ex Works

LEATHERS

KAIROS	€ 26 640
SEQUOIA	€ 21 360
ORGANIC	€ 23 120

BOUCLÉ

LOUISON	€ 40 640
AGNES	€ 39 640
SOLANGE	€ 29 700
ELLE	€ 19 000
JUDITH	€ 26 170

WOOLS

VIDAR 4	€ 19 990
---------	----------

VELVETS & VELOURS

BOLD	€ 34 090
TEDDY MOHAIR	€ 33 520
BYRAM	€ 26 410
GENTLE 2	€ 21 080
VIGGO	€ 24 730
EINAR	€ 30 010

PLAINS

PULP	€ 17 030
CIFRADO	€ 18 760
MOSS	€ 17 350
NARA	€ 19 260
BASILE	€ 20 050
SONAR 3	€ 23 340

C.O.M. No Cover € 18 840



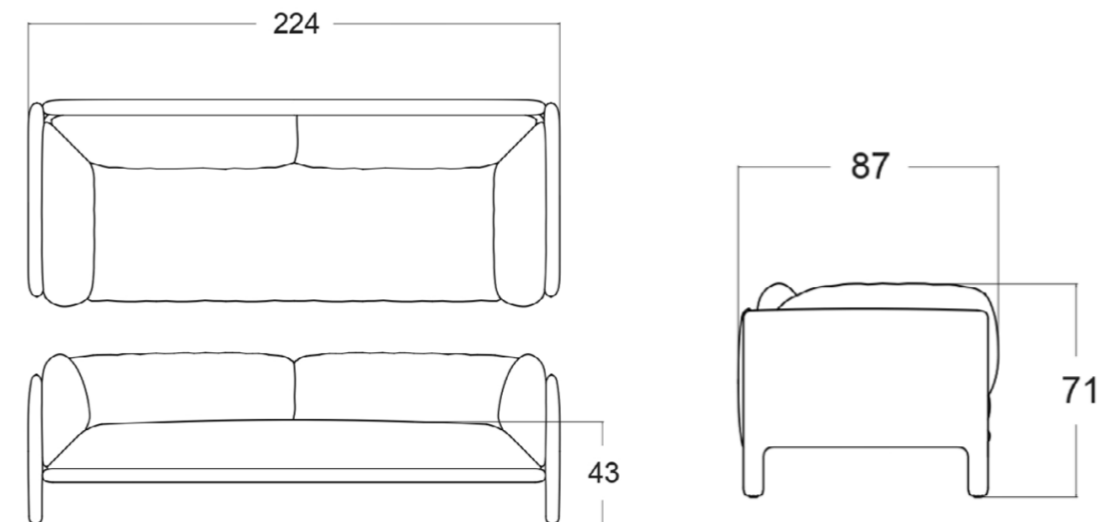
C.O.M.* prices do not include fabric costs for the upholstery. Fabric meters are referred to plain fabric, h 140 cm. For striped, patterned fabrics or leather, please ask for meters required. Our furniture is not fireproof. For C.O.M., possibility to request fireproof foam on request (1 IM, California TB 117, British Standard). Timing and costs to be confirmed.

BOON_EDITIONS SAS reserves the right, at its discretion, to insert the piping at the seams where necessary to guarantee the quality of the finished product.

* customer's own material

1 please refer to fabric chart at the end of the price list

2 please refer to color chart at the end of the pricelist for color choice





STRATA TABLE

PRODUCT FACT SHEET

PRODUCT TYPE

Coffee / Side table

YEAR & EDITION

2021, EDITION N° 1
Aeon Prox by Pieter Maes

ENVIRONMENT

Indoor / Outdoor

DIMENSIONS

H 32 L 141 D 105 CM / H 12.5 L 55.5 D 41 inch
Weight: 540 Kg

PACKAGING

Crating: H 52 L 161 D 125 cm

MATERIAL

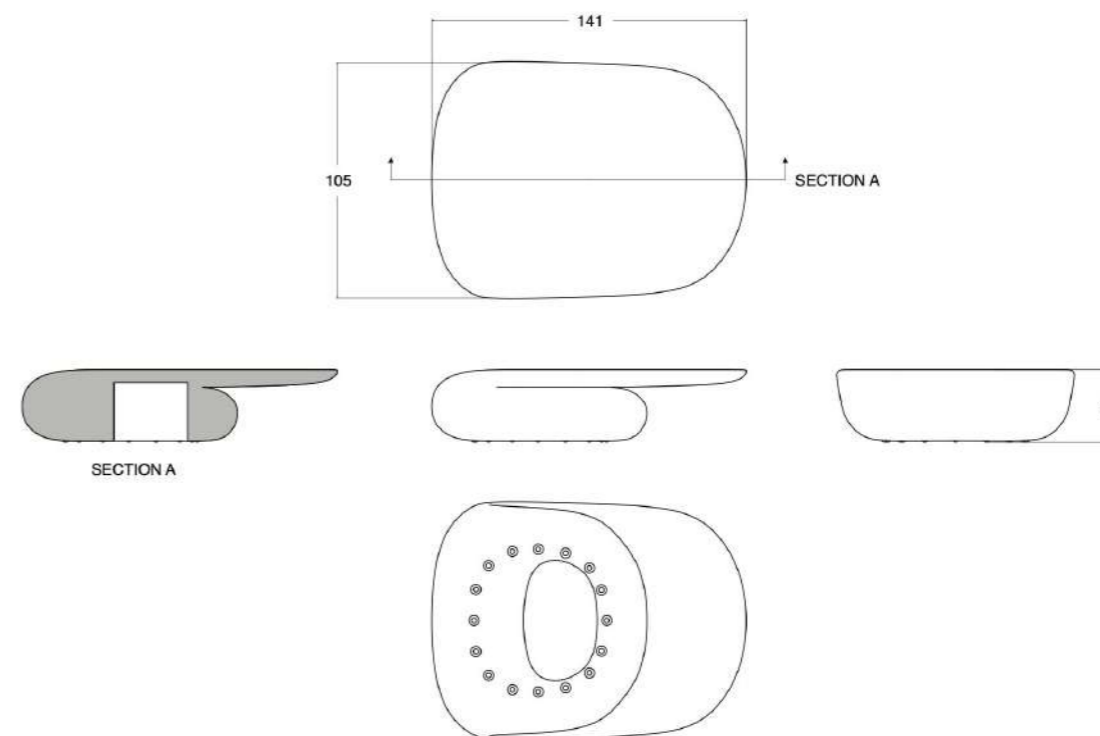
Sculpted Pietra Grigia,
Hammered and honed

One of the marble's characteristics is to have different veins and colours as a result of the different marble blocks used. Different kinds of marble can be used with a personalized quotation.

*Stone collection limited to
Editions of 6 pieces+2 artist pieces
in each material.*

RETAIL PRICE ex works

€ 33 600



NIKI STOOL

PRODUCT FACT SHEET

PRODUCT TYPE

Stool / Seating

YEAR & EDITION

2020, EDITION N°1
Aeon Prox by Pieter Maes

ENVIRONMENT

Indoor / Outdoor

DIMENSIONS

H 51 L 42 D 35 CM / H 20 L 16.5 D 13.8 inch
Weight: 67kg

PACKAGING

Crating: H 71 L 62 D 55 cm

MATERIAL

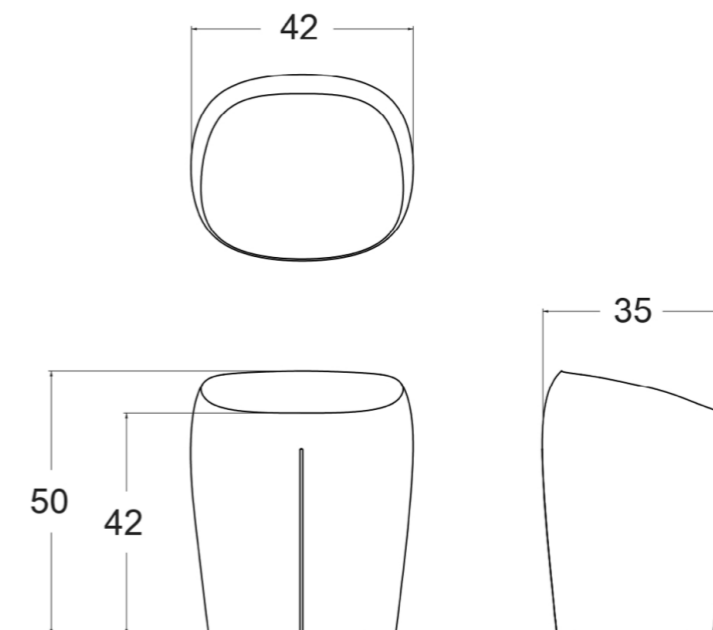
Sculpted Pietra Grigia
Hammered and honed

One of the marble's characteristics is to have different veins and colours as a result of the different marble blocks used. Different kinds of marble can be used with a personalized quotation.

*Stone collection limited to
Editions of 6 pieces+2 artist pieces
in each material.*

RETAIL PRICE ex works

€ 14 700



STANZA CHAIR

PRODUCT FACT SHEET

PRODUCT TYPE

Chair / Seating

YEAR & EDITION

2020, EDITION N°1
Aeon Prox by Pieter Maes

ENVIRONMENT

Indoor / Outdoor

DIMENSIONS

H 51 L 64 D 54 CM / H 20 L 25 D 21.2 inch
Weight: 210kg

PACKAGING

Crating: H 71 L 85 D 75 cm

MATERIAL

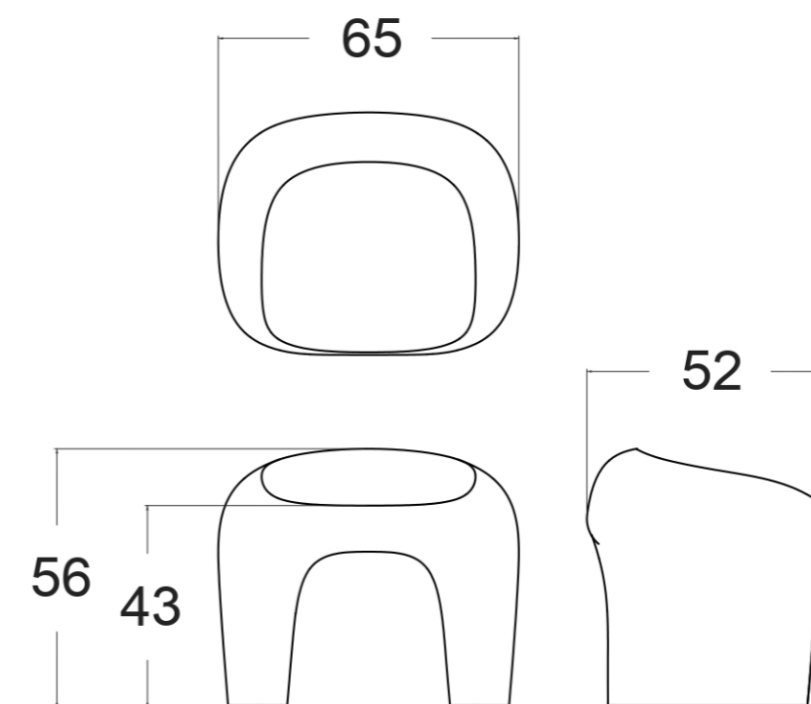
Sculpted Pietra Grigia,
Hammered and honed

One of the marble's characteristics is to have different veins and colours as a result of the different marble blocks used. Different kinds of marble can be used with a personalized quotation.

Stone collection limited to Editions of 6 pieces+2 artist pieces in each material.

RETAIL PRICE ex works

€ 20 580





FABRIC & LEATHER SELECTION

The **EDITIONS** are available in a large selection of fabrics and leathers from some of the most highly acclaimed manufacturers of design textiles, who create high quality contemporary leather, textiles and textile-related products for private and public spaces. Manufacturers such as *Pierre Frey*, *Kvadrat* and *Mastrotto*. The fabric and leather selection reflect the **BOON_EDITIONS** ambition to push the aesthetic, technological and artistic boundaries and are characterized by simplicity, colour and creativity.

LEATHER KAIROS

Bovine of European origin in Nabuk finishing, natural grain. This leather has a grain which varies in structure and offers outstanding comfort. A hide is selected at random from every batch of finished leather. The average size of each skin is around 5.0 sqm. Thickness 1.2 – 1.4 mm. Chrome tannage. Aniline dyed, finished with high quality oils. Suede look, soft and velvet touch. The possible presence of any imperfections testify the authenticity and the natural look of pure aniline leather.



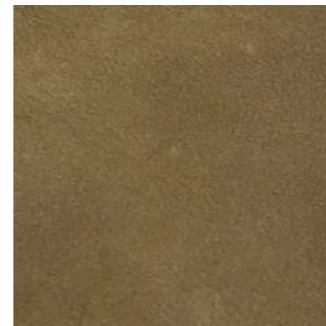
CHALK
1705



DOESKIN
1716



CAQUI
1701



ELEFANT
1715



CONCRETE
1706



CANGAROO
1719



VISION
1720



PLOMO
1710

TECHNICAL INFORMATION

Composition: 100% Leather, Tear strength - single edge tear: UNI EN ISO 3377-1, Measurement Unit N, Guaranteed ≥ 20
Colour fastness to rubbing - Dry 50 Cycles: UNI EN ISO 11640:1998, Measurement Unit - Grey Scale, Guaranteed ≥ 3
Colour fastness to rubbing - Wet 10 Cycles: UNI EN ISO 11640:1998, Measurement Unit - Grey Scale, Guaranteed ≥ 3
Color fastness to artificial light - Exposition energy 16.000 kJ/sqm: UNI EN ISO 105 B02 (MET. 5), Measurement Unit - Grey Scale, Guaranteed ≥ 2 , Burning behaviour to cigarette and match flame: BS EN 1021-1-2 : 2006, BS 5852:1979, Guaranteed Pass

Please note that colours displayed may vary slightly from the actual product. Therefore, we recommend requesting samples before ordering.



LEATHER KAIROS



CHOCOLATE FOREST
1704



ELMONUBUCK II
33073



CUOIO
1708



CARMEL
1709



GRAFITE
1712



EMATITE
1721



ARDESIA
1713



ELMONUBUCK II
99111

TECHNICAL INFORMATION

Composition: 100% Leather, Tear strength - single edge tear: UNI EN ISO 3377-1, Measurement Unit N, Guaranteed ≥ 20
Colour fastness to rubbing - Dry 50 Cycles: UNI EN ISO 11640:1998, Measurement Unit - Grey Scale, Guaranteed ≥ 3
Colour fastness to rubbing - Wet 10 Cycles: UNI EN ISO 11640:1998, Measurement Unit - Grey Scale, Guaranteed ≥ 3
Color fastness to artificial light - Exposition energy 16.000 kJ/sqm: UNI EN ISO 105 B02 (MET. 5), Measurement Unit - Grey Scale, Guaranteed ≥ 2 , Burning behaviour to cigarette and match flame: BS EN 1021-1-2 : 2006, BS 5852:1979, Guaranteed Pass

Please note that colours displayed may vary slightly from the actual product. Therefore, we recommend requesting samples before ordering.

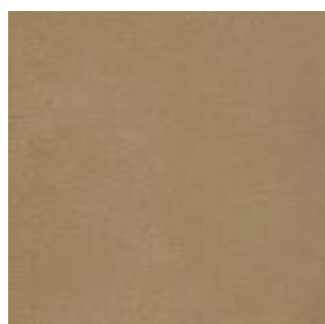


LEATHER SEQUOIA

Bovine of European origin, with a distressed vintage effect. Thickness 0.9 – 1.1 mm. Average surface 4.8 – 5.0 sqm. Through dyed. This high quality article is obtained starting with nubuck leather, which is slightly levelled with aniline and hand rubbed to give an aged effect. It has a very warm and silky feel.



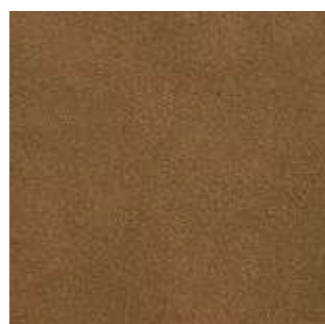
PAPYRUS
4010



CAMEL
4025



TERRA
4003



ANTILOPE
4019



BIRCH
4018



CIMENT
4009



PIETRA
4028



GRIGIO
4007

TECHNICAL INFORMATION

Composition: 100% Leather, Tear strength - Single edge tear: UNI EN ISO 3377-1, Measurement Unit N, Guaranteed ≥ 20
Colour fastness to rubbing - Dry 50 Cycles: UNI EN ISO 11640:1998, Measurement Unit Grey Scale, Guaranteed $\geq 3/4$
Colour fastness to rubbing - Wet 20 Cycles: UNI EN ISO 11640:1998, Measurement Unit Grey Scale, Guaranteed ≥ 3
Colour fastness to rubbing - Sweat 20 Cycles: UNI EN ISO 11640:1998 ISO 11641 pH8, Measurement Unit Grey Scale, Guaranteed ≥ 3 ,
Flexing endurance - Dry 50.000 Cycles: UNI EN ISO 5402, Guaranteed No damage
Color fastness to artificial light - Exposition energy 16.000 kJ/sqm: UNI EN ISO 105 B02 (MET. 5), Measurement Unit Blue Scale, Guaranteed ≥ 3 , Burning behaviour to cigarette and match flame: BS 5852:1979 BS EN 1021-1-2:2006, Guaranteed Pass

Please note that colours displayed may vary slightly from the actual product. Therefore, we recommend requesting samples before ordering.



LEATHER SEQUOIA



CARBONE
4004



ANTRACITE
4027

TECHNICAL INFORMATION

Composition: 100% Leather, Tear strength - Single edge tear: UNI EN ISO 3377-1, Measurement Unit N, Guaranteed ≥ 20
Colour fastness to rubbing - Dry 50 Cycles: UNI EN ISO 11640:1998, Measurement Unit Grey Scale, Guaranteed $\geq 3/4$
Colour fastness to rubbing - Wet 20 Cycles: UNI EN ISO 11640:1998, Measurement Unit Grey Scale, Guaranteed ≥ 3
Colour fastness to rubbing - Sweat 20 Cycles: UNI EN ISO 11640:1998 ISO 11641 pH8, Measurement Unit Grey Scale, Guaranteed ≥ 3
Flexing endurance - Dry 50.000 Cycles: UNI EN ISO 5402, Guaranteed No damage
Color fastness to artificial light - Exposition energy 16.000 kJ/sqm: UNI EN ISO 105 B02 (MET. 5), Measurement Unit Blue Scale, Guaranteed ≥ 3 , Burning behaviour to cigarette and match flame: BS 5852:1979 BS EN 1021-1-2:2006, Guaranteed Pass

Please note that colours displayed may vary slightly from the actual product. Therefore, we recommend requesting samples before ordering.



LEATHER ORGANIC

Aniline cowhide 100% leather, produced by an accurate metal-free organic tanning process, made on bullskins of European origin. The retannage is done with tannins, the leather is vacuum dried and finished with waxes and anilines. Thickness is 1.1 – 1.3 mm. Average size is 5.0 – 5.5 sqm. The article complies with the UNI EN 15987 standard. The leather conveys uniqueness of character, the round and compact structure lends to highlighting the refinement of a silky hand, enhanced by a transparent look with soft pull-up effect.



ORGANIC LEATHER INK

TECHNICAL INFORMATION

Composition: 100% Leather, Tear strength - Single edge tear: UNI EN ISO 3377-1, Measurement Unit N, Guaranteed ≥ 20
Colour fastness to rubbing - Dry 50 Cycles: UNI EN ISO 11640:1998, Measurement Unit Grey Scale, Guaranteed ≥ 3
Flexing endurance - Dry 50.000 Cycles: UNI EN ISO 5402, Guaranteed No damage
Color fastness to artificial light - Exposition energy 16.000 kJ/sqm: UNI EN ISO 105 B02 (MET. 5), Measurement Unit Blue Scale, Guaranteed ≥ 2
Burning behaviour: CAL TB-117 (2013, Sec. 1), Guaranteed Pass

Please note that colours displayed may vary slightly from the actual product. Therefore, we recommend requesting samples before ordering.

BOUCLÉ LOUISON

A thick wool bouclette for a chic but natural upholstery look.



CREME



PERLE

TECHNICAL INFORMATION

Type - Bouclé fabrics - Plains - Fibres douces, Utilisation - Intensive use, Martindale > 25 000 T, Composition - 41 % Wool 39 % Alpaca 17 % Cotton 3 % Acrylic, Width 133 cm - 52,36 inch, Weight 1328 gr / m²
Certifications: EN1021-1-2, BS5852 Cigarette & match test, NFPA 260-Class 1, CRIB 5 in conjunction with suitable combustion modified foam

Notes & Informations: Reinforced stitching recommended to avoid fraying at seams

Please note that colours displayed may vary slightly from the actual product. Therefore, we recommend requesting samples before ordering.



BOUCLÉ AGNES

Made with long, noble fibers that have been brushed after weaving, the loops of AGNES confer elegant restraint with their delicacy and incomparable softness. Caractéristiques



NATUREL

TECHNICAL INFORMATION

Type - Hairy fabrics Bouclé fabrics Fibres douces, Utilisation - Normal use, Martindale > 25 000 T, Composition - 60 % Mohair 21 % Cotton 15 % Wool 4 % Polyester, Width 120 cm - 47,24 inch, Weight 1404 gr / m²
Certifications: BS5852 Cigarette & match test, EN1021-1-2 in conjunction with suitable combustion modified foam, NFPA 260-Class 1, CRIB 5 in conjunction with suitable combustion modified foam
Notes & Informations: Patina with use, Cutting for approval recommended, Boucle 100% wool, Reinforced stitching recommended to avoid fraying at seams

Please note that colours displayed may vary slightly from the actual product. Therefore, we recommend requesting samples before ordering.



BOUCLÉ SOLANGE

With fine, delicate loops in Peruvian alpaca wool, SOLANGE has an incomparably luxurious feel.



NATUREL



SOURIS

TECHNICAL INFORMATION

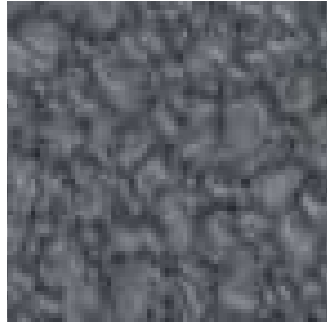
Type - Bouclé fabrics - Plains - Fibres douces, Utilisation - Moderate use, Martindale < 15.000 T, Composition - 41 % Alpaca 35 % Cotton 7 % Wool 7 % Acrylic 5 % Silk 5 % Linen, Width 136 cm - 53,54 inch, Weight 816 gr / m²
Certifications: BS5852 Cigarette & match test, EN1021-1-2 in conjunction with suitable combustion modified foam, NFPA 260-Class 1, CRIB 5 in conjunction with suitable combustion modified foam
Notes & Informations: Cutting for approval recommended, Boucle 100% wool, Reinforced stitching recommended to avoid fraying at seams

Please note that colours displayed may vary slightly from the actual product. Therefore, we recommend requesting samples before ordering.



BOUCLÉ ELLE

A curled bouclé fabric, Elle drapes and curves around furniture like an elegant designer coat. The spun bouclé yarn created by blending wool, viscose and acrylic gives the surface a soft tactility. During the subsequent dyeing the yarns take the colour differently, creating captivating shifts within the same tones. This effect and a slight sheen from the acrylic blend bring life to the voluminous textured bouclé surface. Elegant neutrals range from oyster, coffee, pearl white, light ivory and caramel to cactus green, concrete grey, nutmeg, mud brown and ink. Taking cues from fashion, brighter contrast colours are sunset orange, rust, plum and aqua.



0150



0180



0200



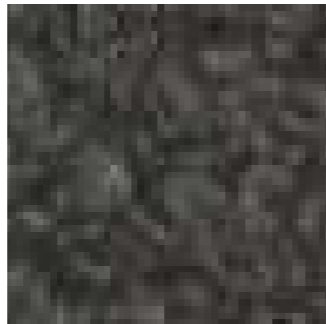
0220



0230



0280



0290



0350

TECHNICAL INFORMATION

Composition 25% cotton 20% viscose 20% polyacrylic 20% new wool 15% nylon, Pattern - Solid, Width Approx. 140 cm, Weight 900 g/lin. m, Repeat Approx. 0/0 cm, Martindale 70,000, Pilling 4-5 (ISO 1-5), Lightfastness 6-7 (ISO 1-8)
Fire test: US Cal. Bull. 117-2013 · BS 5852 crib 5 with treatment · EN 1021-1/2 · BS 5852 part 1 · IMO FTP Code 2010 Part 8
Fastness to Rubbing: 4-5 (Dry) 3 (Wet), Seam Slippage 7 mm (warp), 2 mm (weft)

Please note that colours displayed may vary slightly from the actual product. Therefore, we recommend requesting samples before ordering.



BOUCLÉ ELLE



0390



0480



0530



0680



0750



0950

TECHNICAL INFORMATION

Composition 25% cotton 20% viscose 20% polyacrylic 20% new wool 15% nylon, Pattern - Solid, Width Approx. 140 cm, Weight 900 g/lin. m, Repeat Approx. 0/0 cm, Martindale 70,000, Pilling 4-5 (ISO 1-5), Lightfastness 6-7 (ISO 1-8)
Fire test: US Cal. Bull. 117-2013 · BS 5852 crib 5 with treatment · EN 1021-1/2 · BS 5852 part 1 · IMO FTP Code 2010 Part 8
Fastness to Rubbing: 4-5 (Dry) 3 (Wet), Seam Slippage 7 mm (warp), 2 mm (weft)

Please note that colours displayed may vary slightly from the actual product. Therefore, we recommend requesting samples before ordering.



BOUCLÉ JUDITH

A coarse linen weave for a very natural bouclette effect.



CREME
F3187001



BEIGE
F3187002

TECHNICAL INFORMATION

Type - Bouclé fabrics Plains Fibres douces, Utilisation - Normal use, Martindale > 25 000 T, Composition - 79 % Wool 21 % Cotton, Width 124 cm - 48,81 inch, Weight 1161 gr / m²
Certifications: EN1021-1-2, BS5852 Cigarette & match test, NFPA 260-Class 1, CRIB 5 in conjunction with suitable combustion modified foam

Notes & Informations: Reinforced stitching recommended to avoid fraying at seams

Please note that colours displayed may vary slightly from the actual product. Therefore, we recommend requesting samples before ordering.

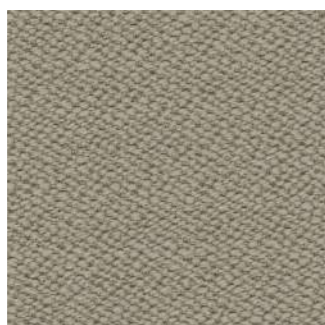


WOOLS VIDAR

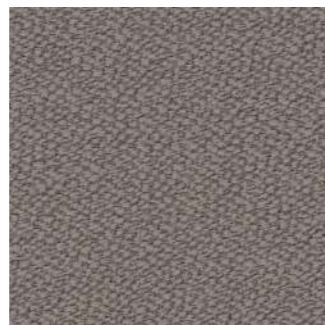
Originally designed by Fanny Aronsen, Vidar has been re-coloured by Raf Simons, with shades ranging from moss green, dark aubergine, ruby red and midnight blue through to brick and earth tones, and easy neutrals. The gentle satin surface finish of the weave contrasts with the deep shadowy tones in the depths, giving a multifaceted richness to the intense colours in the range. Tightly woven, without the irregularities of the other bouclé fabrics within this collection, Vidar has an inviting texture, which variously recalls blackberries, orange peel or the comforting close-knit texture of a favourite sweater.



0123



0222



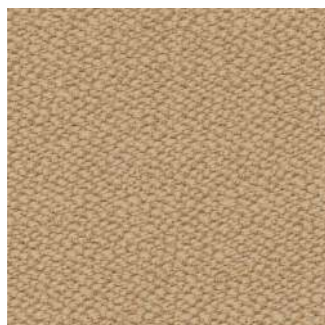
0143



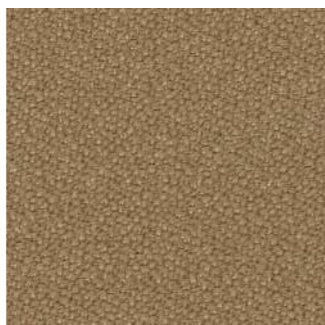
0133



1511



0323



0333



0353

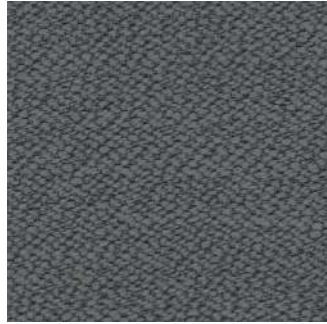
TECHNICAL INFORMATION

Composition 94% new wool 6% nylon, Pattern - Solid, Width Approx. 140 cm, Weight 770 g/lin. m, Repeat Approx. 0/0 cm, Martindale 100,000, Pilling 4 (ISO 1-5), Lightfastness 6-7
Fire test: BS 5852 crib 5 with treatment · BS 5852 part 1 · IMO FTP Code 2010 Part 8 · NF D 60 013 · NFPA 260 · UNI 9175 11M · US Cal. Bull. 117-2013 · EN 1021-1/2 · AS/NZS 3837 class 2 · SN 198 898 5.3 with treatment · IMO FTP Code 2010 Part 7 with treatment · NFPA 701 with treatment · AS/NZS 1530.3
Fastness to Rubbing: 4-5 (Dry) 4 (Wet), Seam Slippage 5.5 mm (warp), 7 mm (weft), Absorption 0.55/Class D (Absorption flat), Airflow 367 Pa s/m

Please note that colours displayed may vary slightly from the actual product. Therefore, we recommend requesting samples before ordering.



WOOLS VIDAR



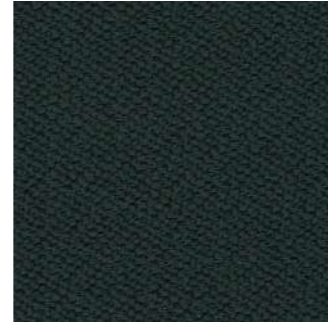
0152



0182



1880



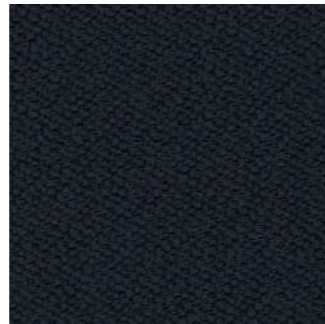
1062



0363



0472



0554



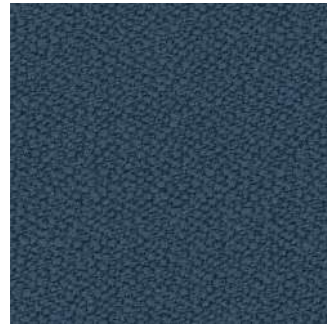
0972

TECHNICAL INFORMATION

Composition 94% new wool 6% nylon, Pattern - Solid, Width Approx. 140 cm, Weight 770 g/lin. m, Repeat Approx. 0/0 cm, Martindale 100,000, Pilling 4 (ISO 1-5), Lightfastness 6-7
Fire test: BS 5852 crib 5 with treatment · BS 5852 part 1 · IMO FTP Code 2010 Part 8 · NF D 60 013 · NFPA 260 · UNI 9175 1IM · US Cal. Bull. 117-2013 · EN 1021-1/2 · AS/NZS 3837 class 2 · SN 198 898 5.3 with treatment · IMO FTP Code 2010 Part 7 with treatment · NFPA 701 with treatment · AS/NZS 1530.3
Fastness to Rubbing: 4-5 (Dry) 4 (Wet), Seam Slippage 5.5 mm (warp), 7 mm (weft), Absorption 0.55/Class D (Absorption flat), Airflow 367 Pa s/m

Please note that colours displayed may vary slightly from the actual product. Therefore, we recommend requesting samples before ordering.

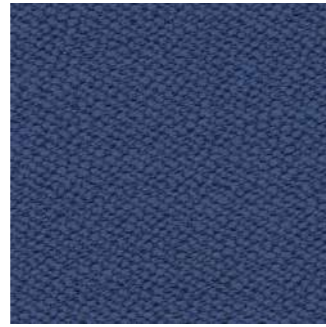
WOOLS VIDAR



0733



0772



0743



0443



0633



0542



0582



0693

TECHNICAL INFORMATION

Composition 94% new wool 6% nylon, Pattern - Solid, Width Approx. 140 cm, Weight 770 g/lin. m, Repeat Approx. 0/0 cm, Martindale 100,000, Pilling 4 (ISO 1-5), Lightfastness 6-7
Fire test: BS 5852 crib 5 with treatment · BS 5852 part 1 · IMO FTP Code 2010 Part 8 · NF D 60 013 · NFPA 260 · UNI 9175 11M · US Cal. Bull. 117-2013 · EN 1021-1/2 · AS/NZS 3837 class 2 · SN 198 898 5.3 with treatment · IMO FTP Code 2010 Part 7 with treatment · NFPA 701 with treatment · AS/NZS 1530.3
Fastness to Rubbing: 4-5 (Dry) 4 (Wet), Seam Slippage 5.5 mm (warp), 7 mm (weft), Absorption 0.55/Class D (Absorption flat), Airflow 367 Pa s/m

Please note that colours displayed may vary slightly from the actual product. Therefore, we recommend requesting samples before ordering.



VELVETS & VELOURS **BOLD**

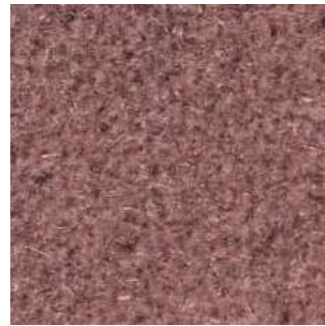
India Mahdavi has created a collection for Pierre Frey that focuses on velvet, a favorite material invented in Kashmir and known as “swansdown”; it was first used in Iran and later imported to Europe. BOLD is a mohair velvet with an incomparable softness. A close-trimmed nap gives this beautiful plain fabric density and unique comfort..



God Save The Queen



Lily



Piggy



Cherry



Deep Sky



Cigare



Forest



Army

TECHNICAL INFORMATION

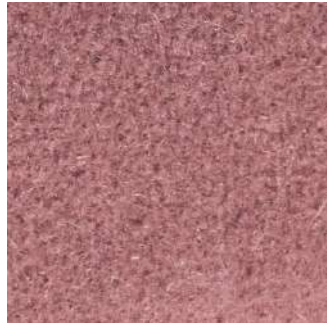
Type - Plains - Velvets, Utilisation - Intensive use, Martindale 100.000 T, Composition - 63 % Mohair 37 % Cotton, Width 140 cm, Weight 910 gr / m²

Certifications: EN1021-1-2, BS5852 Cigarette & match test, NFPA 260-Class 1, CRIB 5 in conjunction with suitable combustion modified foam

Notes & Informations: Can be embossed, Pile 100% mohair

Please note that colours displayed may vary slightly from the actual product. Therefore, we recommend requesting samples before ordering.

VELVETS & VELOURS BOLD



Sketch



Lipstick



Fog



Powder



In Love



Fougère



Plaitre



Dune

TECHNICAL INFORMATION

Type - Plains - Velvets, Utilisation - Intensive use, Martindale 100.000 T, Composition - 63 % Mohair 37 % Cotton, Width 140 cm, Weight 910 gr / m²

Certifications: EN1021-1-2, BS5852 Cigarette & match test, NFPA 260-Class 1, CRIB 5 in conjunction with suitable combustion modified foam

Notes & Informations: Can be embossed, Pile 100% mohair

Please note that colours displayed may vary slightly from the actual product. Therefore, we recommend requesting samples before ordering.



VELVETS & VELOURS BOLD



Céladon



Safran



Mud



Méditerranée



Navy

TECHNICAL INFORMATION

Type - Plains - Velvets, Utilisation - Intensive use, Martindale 100.000 T, Composition - 63 % Mohair 37 % Cotton, Width 140 cm, Weight 910 gr / m²

Certifications: EN1021-1-2, BS5852 Cigarette & match test, NFPA 260-Class 1, CRIB 5 in conjunction with suitable combustion modified foam

Notes & Informations: Can be embossed, Pile 100% mohair

Please note that colours displayed may vary slightly from the actual product. Therefore, we recommend requesting samples before ordering.



VELVETS & VELOURS TEDDY MOHAIR

Very attractive velvet with long mohair calling to mind our childhood 'Teddy bear'.



Ivoire



Crème



Miel



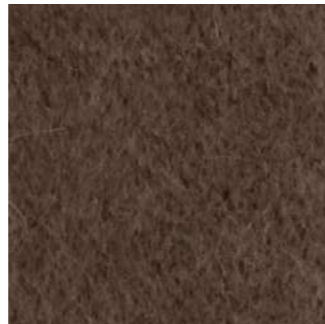
Taupe



Moka



Café



Gris Souris



Noir

TECHNICAL INFORMATION

Type - Plains - Velvets, Utilisation - Intensive use, Martindale 85.000 T, Composition - 65 % Mohair 35 % Cotton, Width 141 cm, Weight 1270 gr / m²

Certifications: EN1021-1-2, BS5852 Cigarette & match test, CLASSE UNO, NFPA 260-Class 1, CRIB 5

Notes & Informations: Can be embossed, Pile 100% mohair

Please note that colours displayed may vary slightly from the actual product. Therefore, we recommend requesting samples before ordering.



VELVETS & VELOURS TEDDY MOHAIR



Marine



Amethyste



Bordeaux



Cardinal



Acajou



Moutarde



Olive



Mousse

TECHNICAL INFORMATION

Type - Plains - Velvets, Utilisation - Intensive use, Martindale 85.000 T, Composition - 65 % Mohair 35 % Cotton, Width 141 cm, Weight 1270 gr / m²

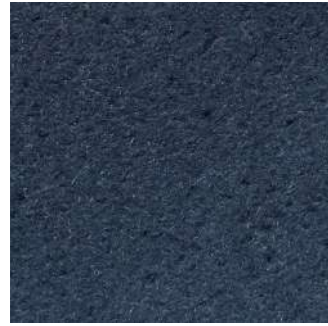
Certifications: EN1021-1-2, BS5852 Cigarette & match test, CLASSE UNO, NFPA 260-Class 1, CRIB 5

Notes & Informations: Can be embossed, Pile 100% mohair

Please note that colours displayed may vary slightly from the actual product. Therefore, we recommend requesting samples before ordering.



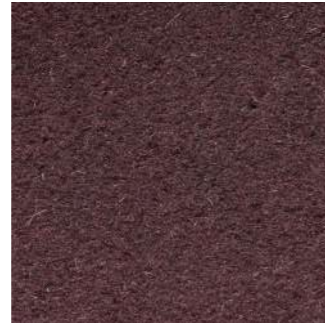
VELVETS & VELOURS TEDDY MOHAIR



Orage



Éléphant



Aubergine



Cyclone



Tourterelle



Plume



Écorce



Nacre

TECHNICAL INFORMATION

Type - Plains - Velvets, Utilisation - Intensive use, Martindale 85.000 T, Composition - 65 % Mohair 35 % Cotton, Width 141 cm, Weight 1270 gr / m²

Certifications: EN1021-1-2, BS5852 Cigarette & match test, CLASSE UNO, NFPA 260-Class 1, CRIB 5

Notes & Informations: Can be embossed, Pile 100% mohair

Please note that colours displayed may vary slightly from the actual product. Therefore, we recommend requesting samples before ordering.



VELVETS & VELOURS TEDDY MOHAIR



Sable



Choco



Hérisson



Dune



Caramel



Perle



Graminées



Ciel

TECHNICAL INFORMATION

Type - Plains - Velvets, Utilisation - Intensive use, Martindale 85.000 T, Composition - 65 % Mohair 35 % Cotton, Width 141 cm, Weight 1270 gr / m²

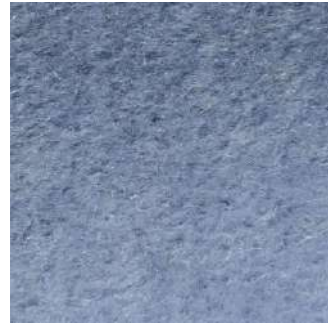
Certifications: EN1021-1-2, BS5852 Cigarette & match test, CLASSE UNO, NFPA 260-Class 1, CRIB 5

Notes & Informations: Can be embossed, Pile 100% mohair

Please note that colours displayed may vary slightly from the actual product. Therefore, we recommend requesting samples before ordering.



VELVETS & VELOURS TEDDY MOHAIR



Céladon



Bambi

TECHNICAL INFORMATION

Type - Plains - Velvets, Utilisation - Intensive use, Martindale 85.000 T, Composition - 65 % Mohair 35 % Cotton, Width 141 cm, Weight 1270 gr / m²

Certifications: EN1021-1-2, BS5852 Cigarette & match test, CLASSE UNO, NFPA 260-Class 1, CRIB 5

Notes & Informations: Can be embossed, Pile 100% mohair

Please note that colours displayed may vary slightly from the actual product. Therefore, we recommend requesting samples before ordering.



VELVETS & VELOURS BYRAM

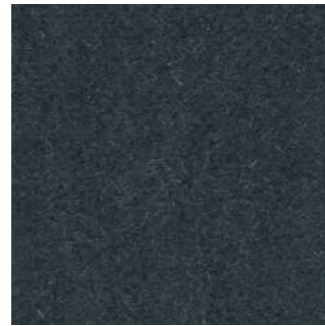
Made with pure kid mohair, Byram is particularly soft to the touch. A palette rooted in warm, pearly greys recalls a young swan's plumage, and extends into cool and rich grey-blues. Contrast comes from the warmth of primrose yellow and gold, cool forest greens and dilutions of cochineal. Thanks to the satiny sheen of its pile, Byram exhibits colour in liquid nuance.



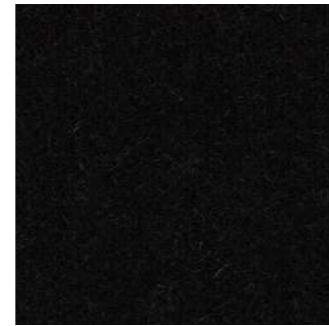
0131



0161



0171



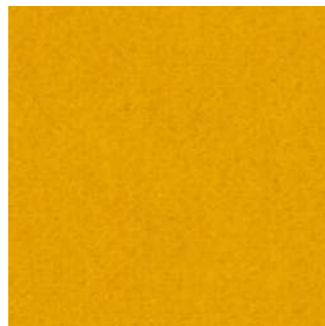
0191



0361



0391



0461



0471

TECHNICAL INFORMATION

Composition 100% kids mohair, Pattern - Solid, Width Approx. 140 cm, Weight 890 g/lin. m, Repeat Approx. 0/0 cm, Martindale 70,000, Pilling 4-5 (ISO 1-5), Lightfastness 7
Fire test: AS/NZS 1530.3 · BS 5852 Crib 5 · BS 5852 part 1 · BS 5867 part 2 type B · IMO FTP Code 2010 Part 8 · NF D 60 013 · SN 198 898 5,3 with treatment · UNI 9175 11M · US Cal. Bull. 117-2013 · EN 1021-1/2 · AS/NZS 3837 class 2 · ÖNORM B1/Q1 · NFPA 260
Fastness to Rubbing: 3-4 (Dry) 3 (Wet), Seam Slippage 3 mm (warp), 3,5 mm (weft), Absorption 0.75/Class C (Absorption flat), Airflow 1522 Pa s/m

Please note that colours displayed may vary slightly from the actual product. Therefore, we recommend requesting samples before ordering.

VELVETS & VELOURS BYRAM



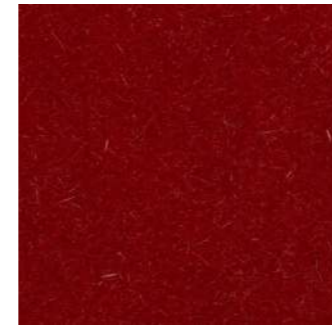
0621



0651



0661



0671



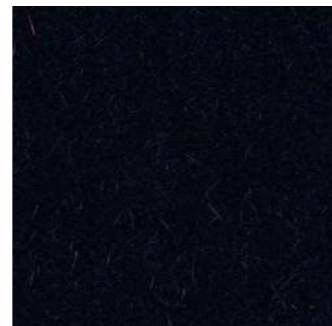
0691



0761



0771



0791

TECHNICAL INFORMATION

Composition 100% kids mohair, Pattern - Solid, Width Approx. 140 cm, Weight 890 g/lin. m, Repeat Approx. 0/0 cm, Martindale 70,000, Pilling 4-5 (ISO 1-5), Lightfastness 7
Fire test: AS/NZS 1530.3 · BS 5852 Crib 5 · BS 5852 part 1 · BS 5867 part 2 type B · IMO FTP Code 2010 Part 8 · NF D 60 013 · SN 198 898 5,3 with treatment · UNI 9175 11M · US Cal. Bull. 117-2013 · EN 1021-1/2 · AS/NZS 3837 class 2 · ÖNORM B1/Q1 · NFPA 260
Fastness to Rubbing: 3-4 (Dry) 3 (Wet), Seam Slippage 3 mm (warp), 3,5 mm (weft), Absorption 0.75/Class C (Absorption flat), Airflow 1522 Pa s/m

Please note that colours displayed may vary slightly from the actual product. Therefore, we recommend requesting samples before ordering.

VELVETS & VELOURS BYRAM



0921



0971



0981

TECHNICAL INFORMATION

Composition 100% kids mohair, Pattern - Solid, Width Approx. 140 cm, Weight 890 g/lin. m, Repeat Approx. 0/0 cm, Martindale 70,000, Pilling 4-5 (ISO 1-5), Lightfastness 7
Fire test: AS/NZS 1530.3 · BS 5852 Crib 5 · BS 5852 part 1 · BS 5867 part 2 type B · IMO FTP Code 2010 Part 8 · NF D 60 013 · SN 198 898 5.3 with treatment · UNI 9175 1IM · US Cal. Bull. 117-2013 · EN 1021-1/2 · AS/NZS 3837 class 2 · ÖNORM B1/Q1 · NFPA 260
Fastness to Rubbing: 3-4 (Dry) 3 (Wet), Seam Slippage 3 mm (warp), 3.5 mm (weft), Absorption 0.75/Class C (Absorption flat), Airflow 1522 Pa s/m

Please note that colours displayed may vary slightly from the actual product. Therefore, we recommend requesting samples before ordering.

VELVETS & VELOURS GENTLE 2

Gentle 2 is the only knitted stretch velvet upholstery textile on the market. Designed by Febrik, it comes in a refreshed colour scale and combines an inviting presence with a sumptuous, soft pile. The textile is constructed by knitting loops through a base layer and subsequently shearing the surface. Thanks to a subtly striated surface which derives from the naturally irregular thicknesses of the woollen yarns, Gentle 2 features a rich surface with an elegant shine.

Gentle 2 has a particularly opulent feel as it is laminated onto a 2mm thick base foam. This ensures the textile stands out with a voluminous expression that sets it apart from traditional woven velvets. Suitable for public and private spaces, Gentle 2 offers excellent stretchability due to its knitted construction.



0973



0963



0933



0873



0783



0753



0733



0683

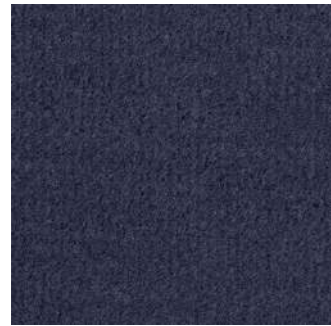
TECHNICAL INFORMATION

Composition 60% new wool 20% polyester 20% nylon,, Width Approx. 167 cm, Weight 970 g/lin. m, Repeat Approx. 0/0 cm, Martindale 90,000, Pilling 4-5 (ISO 1-5), Lightfastness 6-7 (ISO 1-8),
Fire test: BS 5852 crib 5 with treatment · BS 5852 part 1 · IMO FTP Code 2010 Part 8 · UNI 9175 11M · US Cal. Bull. 117-2013 · DIN 4102 B2 · EN 1021-1/2 · ASTM E84 Class A Unadhered · AS/NZS 3837
Fastness to Rubbing: 4-5 (Dry) 4-5 (Wet), Absorption 0.50/Class D (Absorption flat), Airflow 271 Pa s/m

Please note that colours displayed may vary slightly from the actual product. Therefore, we recommend requesting samples before ordering.



VELVETS & VELOURS GENTLE 2



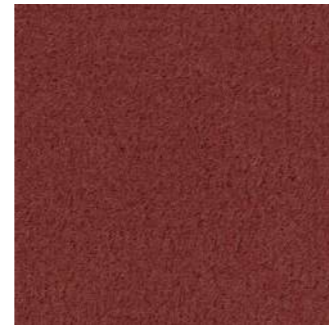
0673



0663



0623



0573



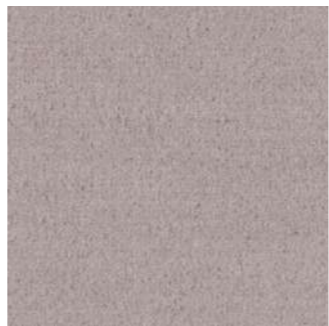
0553



0443



0373



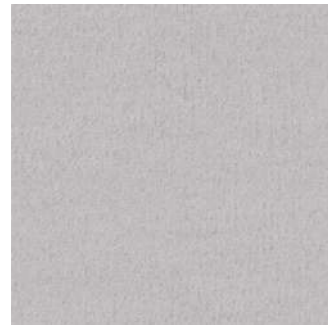
0223

TECHNICAL INFORMATION

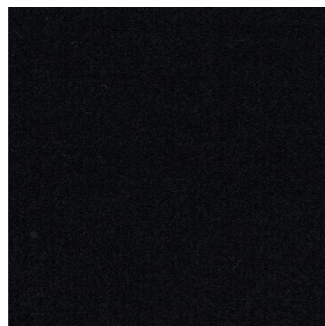
Composition 60% new wool 20% polyester 20% nylon,, Width Approx. 167 cm, Weight 970 g/lin. m, Repeat Approx. 0/0 cm, Martindale 90,000, Pilling 4-5 (ISO 1-5), Lightfastness 6-7 (ISO 1-8),
Fire test: BS 5852 crib 5 with treatment · BS 5852 part 1 · IMO FTP Code 2010 Part 8 · UNI 9175 11M · US Cal. Bull. 117-2013 · DIN 4102 B2 · EN 1021-1/2 · ASTM E84 Class A Unadhered · AS/NZS 3837
Fastness to Rubbing: 4-5 (Dry) 4-5 (Wet), Absorption 0.50/Class D (Absorption flat), Airflow 271 Pa s/m

Please note that colours displayed may vary slightly from the actual product. Therefore, we recommend requesting samples before ordering.

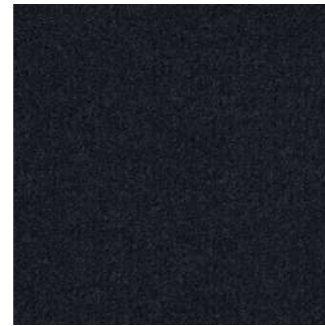
VELVETS & VELOURS GENTLE 2



0203



0193



0183



0133



0113

TECHNICAL INFORMATION

Composition 60% new wool 20% polyester 20% nylon,, Width Approx. 167 cm, Weight 970 g/lin. m
Repeat Approx. 0/0 cm, Martindale 90,000, Pilling 4-5 (ISO 1-5), Lightfastness 6-7 (ISO 1-8),
Fire test: BS 5852 crib 5 with treatment · BS 5852 part 1 · IMO FTP Code 2010 Part 8 · UNI 9175 11M · US Cal. Bull. 117-2013 · DIN 4102 B2
· EN 1021-1/2 · ASTM E84 Class A Unadhered · AS/NZS 3837
Fastness to Rubbing: 4-5 (Dry) 4-5 (Wet), Absorption 0.50/Class D (Absorption flat), Airflow 271 Pa s/m

Please note that colours displayed may vary slightly from the actual product. Therefore, we recommend requesting samples before ordering.

VELVETS & VELOURS EINAR

Plush and ultra-soft from the combination of mohair and alpaca, Einar is a masterful take on modern luxury: exclusive, of the moment, and the ultimate in comfort and tactility. Even when intensely coloured, the dense and deep pile captures the characteristics of the natural fibres in a form that is both organic and structure. Powdery and lively, the nuanced colour of the evenly cut pile is accentuated by slight variations in the cotton base.

A more controlled version of Argo, Einar re-interprets the sheepskins, furs and mohair used by mid-century designers such as Jean Royère. Raf Simons also takes cues from his AW21 fashion collection, one he said was a manifestation of the 'things he has always loved' and which explored how contrasting elements can achieve equilibrium.



0127



0197



0427



0527



0577



0987

TECHNICAL INFORMATION

Composition 70% alpaca 30% mohair, Pattern - Solid, Width Approx. 140 cm, Weight 670 g/lin. m, Repeat Approx. 0/0 cm, Martindale 20,000, Pilling 5 (ISO 1-5), Lightfastness 7 (ISO 1-8)
Fire test: US Cal. Bull. 117-2013 · UNI 9175 11M · IMO FTP Code 2010 Part 8 · EN 1021-1/2 · BS 5852 Crib 5 · ÖNORM B1/Q1 · AS/NZS 3837 class 4 · NF D 60 013 · BS 5852 part 1
Fastness to Rubbing: 4-5 (Dry) 4-5 (Wet), Seam Slippage 3 mm (warp), 3 mm (weft)

Please note that colours displayed may vary slightly from the actual product. Therefore, we recommend requesting samples before ordering.

VELVETS & VELOURS VIGGO

Shimmer and softness are the principal qualities of this silk and cotton velvet with an incomparable feel. Presented in refined colors, it will find a place in both traditional and contemporary interiors. The very high quality of the cotton and silk threads chosen for this velvet capture light and reveal the full depth of the colors and their precious, glowing highlights. Careful attention has been paid to weave density, giving the fabric an exceptional feel that expresses the luxury of this velvet.



Crème



Craie



Caramel



Cacao



Bois



Souris



Eléphant



Ardoise

TECHNICAL INFORMATION

Type - Plains - Velvets, Utilisation - Intensive use, Martindale >100.000 T, Composition - 88 % Cotton 12 % Silk, Width 142 cm, Weight 940 gr / m²

Certifications: BS5852 Cigarette & match test, EN1021-1-2 in conjunction with suitable combustion modified foam

Notes & Informations: Can be embossed, Silk and cotton pile

Please note that colours displayed may vary slightly from the actual product. Therefore, we recommend requesting samples before ordering.

VELVETS & VELOURS VIGGO



Charbon



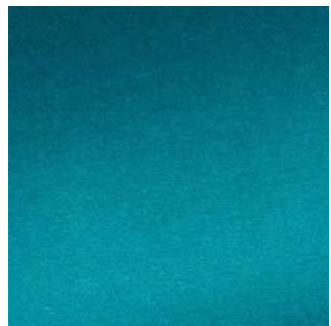
Nuit



Matelot



Petrole



Canard



Céladon



Cactus



Amande

TECHNICAL INFORMATION

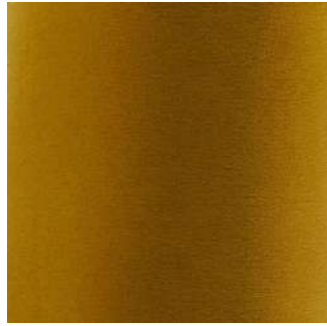
Type - Plains - Velvets, Utilisation - Intensive use, Martindale >100.000 T, Composition - 88 % Cotton 12 % Silk, Width 142 cm, Weight 940 gr / m²

Certifications: BS5852 Cigarette & match test, EN1021-1-2 in conjunction with suitable combustion modified foam

Notes & Informations: Can be embossed, Silk and cotton pile

Please note that colours displayed may vary slightly from the actual product. Therefore, we recommend requesting samples before ordering.

VELVETS & VELOURS VIGGO



Mordoré



Poudre

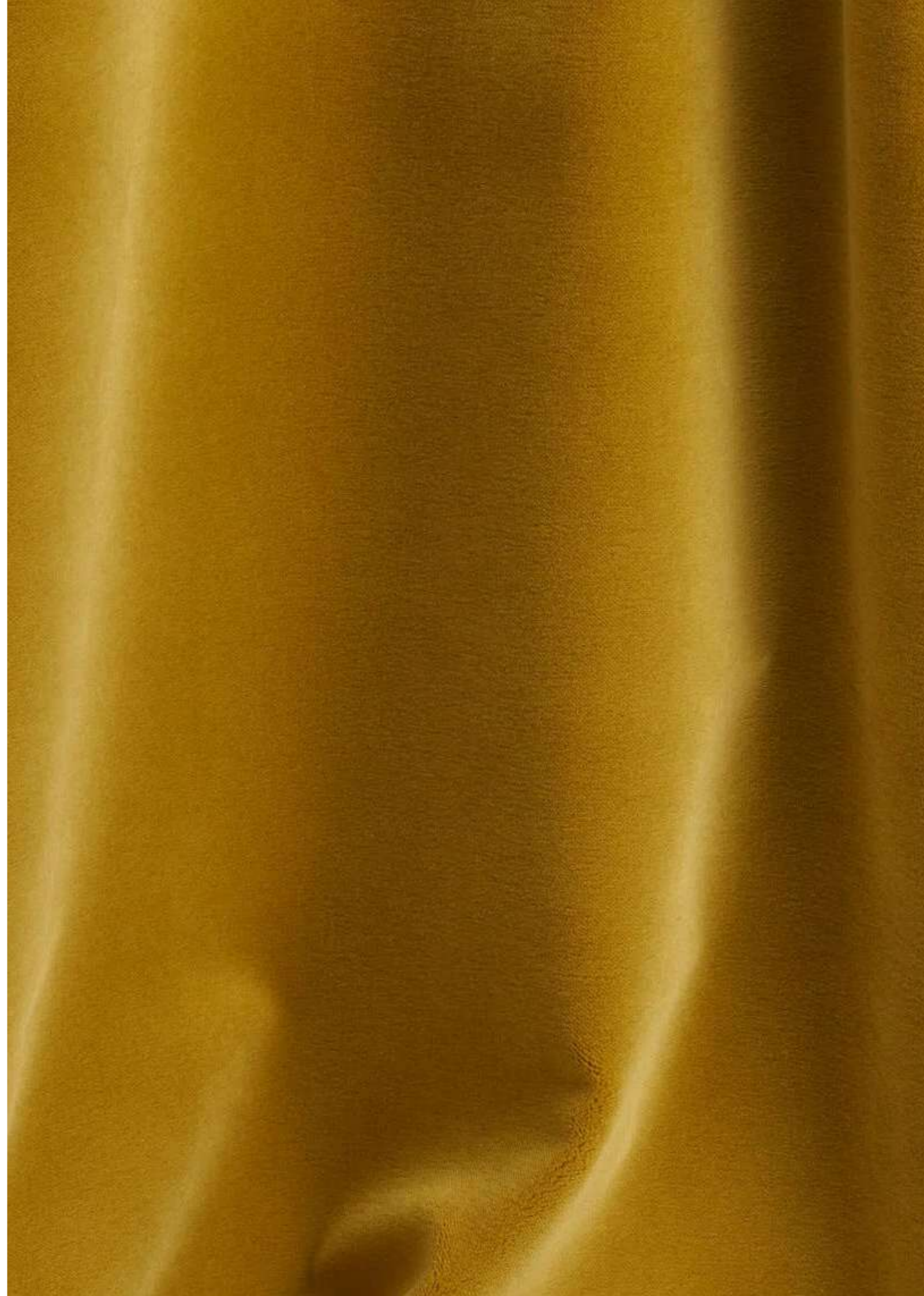
TECHNICAL INFORMATION

Type - Plains - Velvets, Utilisation - Intensive use, Martindale >100.000 T, Composition - 88 % Cotton 12 % Silk, Width 142 cm, Weight 940 gr / m²

Certifications: BS5852 Cigarette & match test, EN1021-1-2 in conjunction with suitable combustion modified foam

Notes & Informations: Can be embossed, Silk and cotton pile

Please note that colours displayed may vary slightly from the actual product. Therefore, we recommend requesting samples before ordering.



PLAINS PULP

A perfect illusion of genuine suede leather, this plain offers a good-quality alternative. The illusion provided by this extremely resistant fabric also extends to the hand, which is soft, dense and supple. Equally beautiful on both sides, Pulp needs no lining...



Neige



Ecume



Sand



Blé



Kraft



Galet



Écorce

TECHNICAL INFORMATION

Type - Plains, Utilisation - Intensive use, Martindale >25.000 T, Composition - 100 % Polyester, Width 140 cm, Weight 490 gr / m²
Notes & Informations: Reversible, Can be embossed

Please note that colours displayed may vary slightly from the actual product. Therefore, we recommend requesting samples before ordering.

PLAINS SONAR 3

Based on the fine suiting tweeds used in high fashion garments, Sonar 3 presents a complex and sophisticated mixture of colours and texture. The textile's dominant tones are tempered by the inclusion of complementary and contrasting colours to produce a subtle and elegant overall effect.

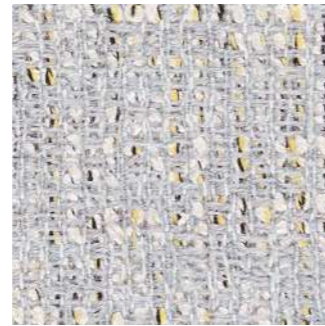
Inspired by the distinctive combinations of colour associated with 1950s cinema, fashion and interiors, tobacco browns come spiked with polar white and duck egg blue; three tones of grey are lifted by soft white laced with thin threads of buttercup yellow and black. Powdery greens, blues and pinks take on an added dimension with fine threads of black, white and red.



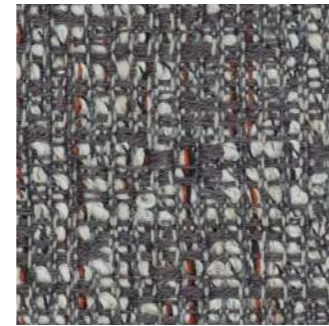
0113



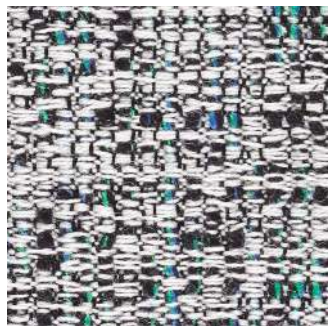
0124



0134



0153



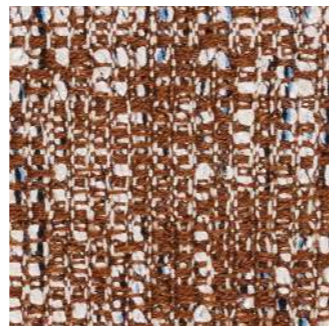
0164



0173



0194



0374

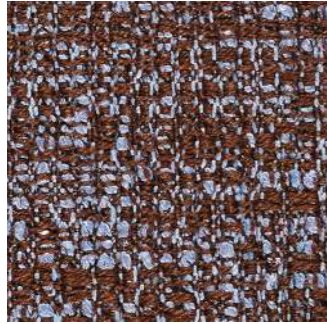
TECHNICAL INFORMATION

Composition 59% new wool 25% viscose 9% linen 5% nylon 2% polyester, Pattern - Geometric, Width Approx. 150 cm, Weight 770 g/lin. m, Repeat Approx. 0/0 cm, Martindale 20,000, Pilling 3-4 (ISO 1-5), Lightfastness 7
Fire test: BS 5852 crib 5 with treatment · BS 5852 part 1 · IMO FTP Code 2010 Part 8 · UNI 9175 11M · US Cal. Bull. 117-2013 · EN 1021-1/2 · AS/NZS 3837 class 2
Fastness to Rubbing: 4-5 (Dry) 4-5 (Wet), Seam Slippage 5.5 mm (warp), 4 mm (weft)

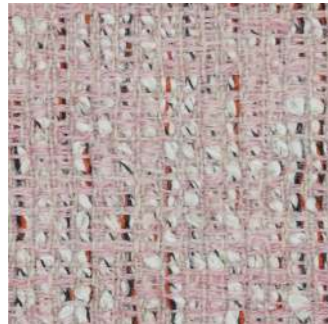
Please note that colours displayed may vary slightly from the actual product. Therefore, we recommend requesting samples before ordering.



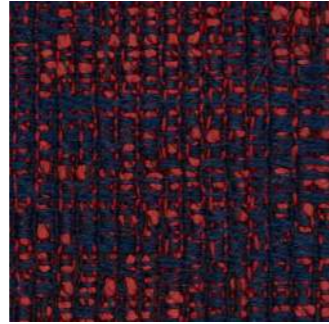
PLAINS SONAR 3



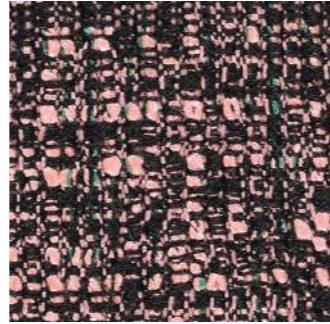
0384



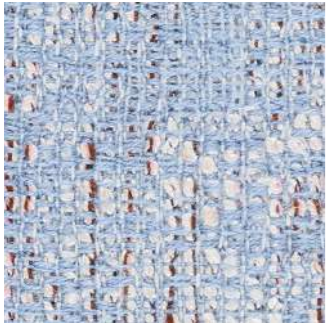
0633



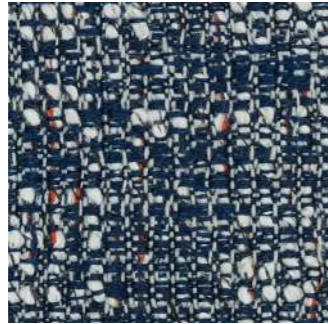
0673



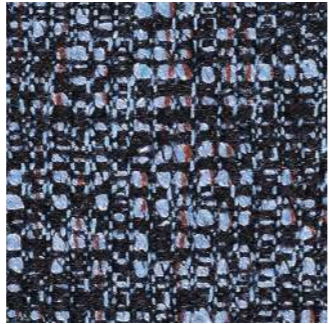
0684



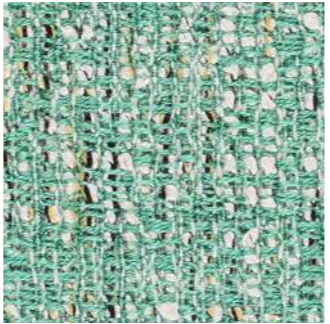
0734



0773



0784



0934

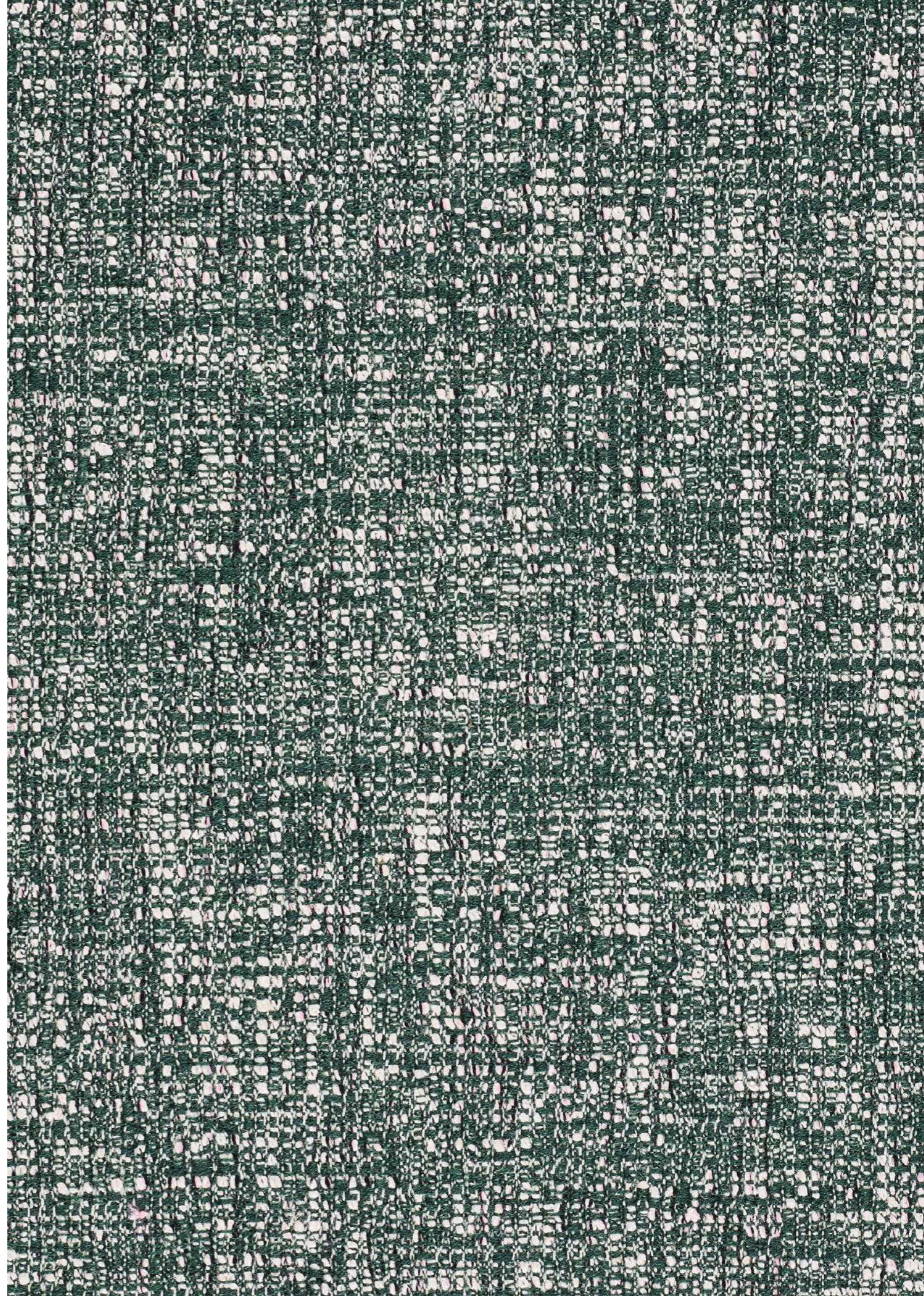


0974

TECHNICAL INFORMATION

Composition 59% new wool 25% viscose 9% linen 5% nylon 2% polyester, Pattern - Geometric, Width Approx. 150 cm, Weight 770 g/lin. m, Repeat Approx. 0/0 cm, Martindale 20,000, Pilling 3-4 (ISO 1-5), Lightfastness 7
Fire test: BS 5852 crib 5 with treatment · BS 5852 part 1 · IMO FTP Code 2010 Part 8 · UNI 9175 11M · US Cal. Bull. 117-2013 · EN 1021-1/2 · AS/NZS 3837 class 2
Fastness to Rubbing: 4-5 (Dry) 4-5 (Wet), Seam Slippage 5.5 mm (warp), 4 mm (weft)

Please note that colours displayed may vary slightly from the actual product. Therefore, we recommend requesting samples before ordering.



PLAINS CIFRADO

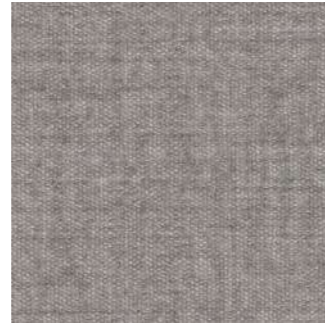
A heavyweight chenille, Cifrado has the soft reassurance of something well-worn and the characteristics of a heavy-duty upholstery textile. Tumble-finished to achieve this lived-in effect, it is technically innovative: combining chenille and twisted cotton with a double warp of twisted linen and viscose and a high percentage of recycled yarns. From muted greys, ivory and lemon vanilla to Bangkok magenta, dusky rose, tobacco melange, petrol blue and inky black.



0111



0121



0131



0221



0231



0241



0381



0401

TECHNICAL INFORMATION

Composition 42% recycled polyester 27% viscose 24% recycled cotton 7% linen, Pattern - Solid, Width Approx. 140 cm, Weight 1,100 g/lin. m, Repeat Approx. 0/0 cm, Martindale 30,000, Pilling 5 (ISO 1-5), Lightfastness 6 (ISO 1-8)
Fire test: BS 5852 part 1 ignition source 0 · US Cal. Bull. 117-2013 · EN 1021-1/2 · BS 5852 part 1 with treatment · IMO FTP Code 2010 Part 8 · AS/NZS 3837 class 2
Fastness to Rubbing: 5 (Dry) 5 (Wet), Seam Slippage 2 mm (warp), 2.5 mm (weft)

Please note that colours displayed may vary slightly from the actual product. Therefore, we recommend requesting samples before ordering.

PLAINS CIFRADO



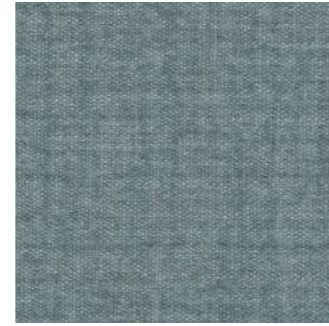
0451



0611



0671



0741



0771



0791



0901

TECHNICAL INFORMATION

Composition 42% recycled polyester 27% viscose 24% recycled cotton 7% linen, Pattern - Solid, Width Approx. 140 cm, Weight 1,100 g/lin. m, Repeat Approx. 0/0 cm, Martindale 30,000, Pilling 5 (ISO 1-5), Lightfastness 6 (ISO 1-8)
Fire test: BS 5852 part 1 ignition source 0 · US Cal. Bull. 117-2013 · EN 1021-1/2 · BS 5852 part 1 with treatment · IMO FTP Code 2010 Part 8 · AS/NZS 3837 class 2
Fastness to Rubbing: 5 (Dry) 5 (Wet), Seam Slippage 2 mm (warp), 2.5 mm (weft)

Please note that colours displayed may vary slightly from the actual product. Therefore, we recommend requesting samples before ordering.



PLAINS MOSS

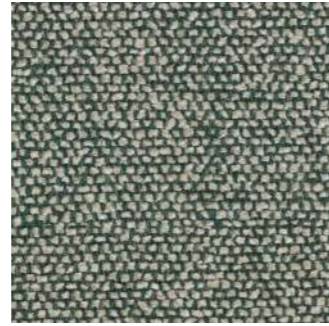
The second design by Vincent van Duysen and Anna Vilhelmine Ebbesen is the distinctive upholstery fabric Moss. The mixture of twisted yarn and chenille gives the fabric surface a textured structure with an appearance of movement, and also creates a soft handle which adds a special dimension to the furniture it covers. The twenty-two colourways are either one- or two-tone combinations inspired by Vincent van Duysen's own home and range from cool cement and soft blue to oily green, curry yellow and the shades of natural wood.



0001



0002



0003



0004



0005



0006



0007



0008

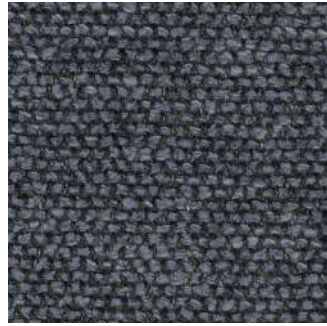
TECHNICAL INFORMATION

Composition 52% cotton 22% viscose 14% polyacrylic 6% linen 3% polyester 3% nylon, Pattern - Solid, Width Approx. 138 cm, Weight 1,030 g/lin. m, Repeat Approx. 0/0 cm, Martindale 50,000, Pilling 4-5 (ISO 1-5), Lightfastness 5-7 (ISO 1-8)
Fire test: BS 5852 crib 5 with treatment · BS 5852 part 1 · EN 1021-1/2 · US Cal. 117-2013 with Cal. 117 compliant interliner · IMO FTP Code 2010 Part 8 · AS/NZS 3837 class 2
Fastness to Rubbing: 4-5 (Dry) 4-5 (Wet), Seam Slippage 4.5 mm (warp), 4.5 mm (weft)

Please note that colours displayed may vary slightly from the actual product. Therefore, we recommend requesting samples before ordering.



PLAINS MOSS



0009



0010



0011



0012



0013



0014



0015



0016

TECHNICAL INFORMATION

Composition 52% cotton 22% viscose 14% polyacrylic 6% linen 3% polyester 3% nylon, Pattern - Solid, Width Approx. 138 cm, Weight 1,030 g/lin. m, Repeat Approx. 0/0 cm, Martindale 50,000, Pilling 4-5 (ISO 1-5), Lightfastness 5-7 (ISO 1-8)
Fire test: BS 5852 crib 5 with treatment · BS 5852 part 1 · EN 1021-1/2 · US Cal. 117-2013 with Cal. 117 compliant interliner · IMO FTP Code 2010 Part 8 · AS/NZS 3837 class 2
Fastness to Rubbing: 4-5 (Dry) 4-5 (Wet), Seam Slippage 4.5 mm (warp), 4.5 mm (weft)

Please note that colours displayed may vary slightly from the actual product. Therefore, we recommend requesting samples before ordering.



PLAINS MOSS



0017



0018



0019



0020



0021



0022

TECHNICAL INFORMATION

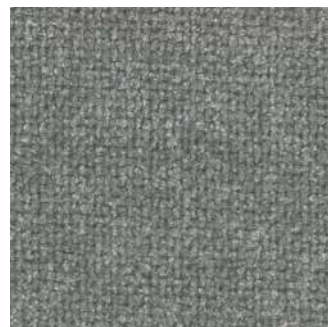
Composition 52% cotton 22% viscose 14% polyacrylic 6% linen 3% polyester 3% nylon, Pattern - Solid, Width Approx. 138 cm, Weight 1,030 g/lin. m, Repeat Approx. 0/0 cm, Martindale 50,000, Pilling 4-5 (ISO 1-5), Lightfastness 5-7 (ISO 1-8)
Fire test: BS 5852 crib 5 with treatment · BS 5852 part 1 · EN 1021-1/2 · US Cal. 117-2013 with Cal. 117 compliant interliner · IMO FTP Code 2010 Part 8 · AS/NZS 3837 class 2
Fastness to Rubbing: 4-5 (Dry) 4-5 (Wet), Seam Slippage 4.5 mm (warp), 4.5 mm (weft)

Please note that colours displayed may vary slightly from the actual product. Therefore, we recommend requesting samples before ordering.



PLAINS NARA

This classic upholstery is given a new twist with a plain weave in viscose and linen chenille that gives a distinctive textured appearance. The rich and soft textile has a semi-dry handle with a lively and natural surface. Available in sixteen shades ranging from sophisticated neutrals to deep bold tones, Nara is a time-less upholstery textile.



0001



0002



0003



0004



0005



0006



0007

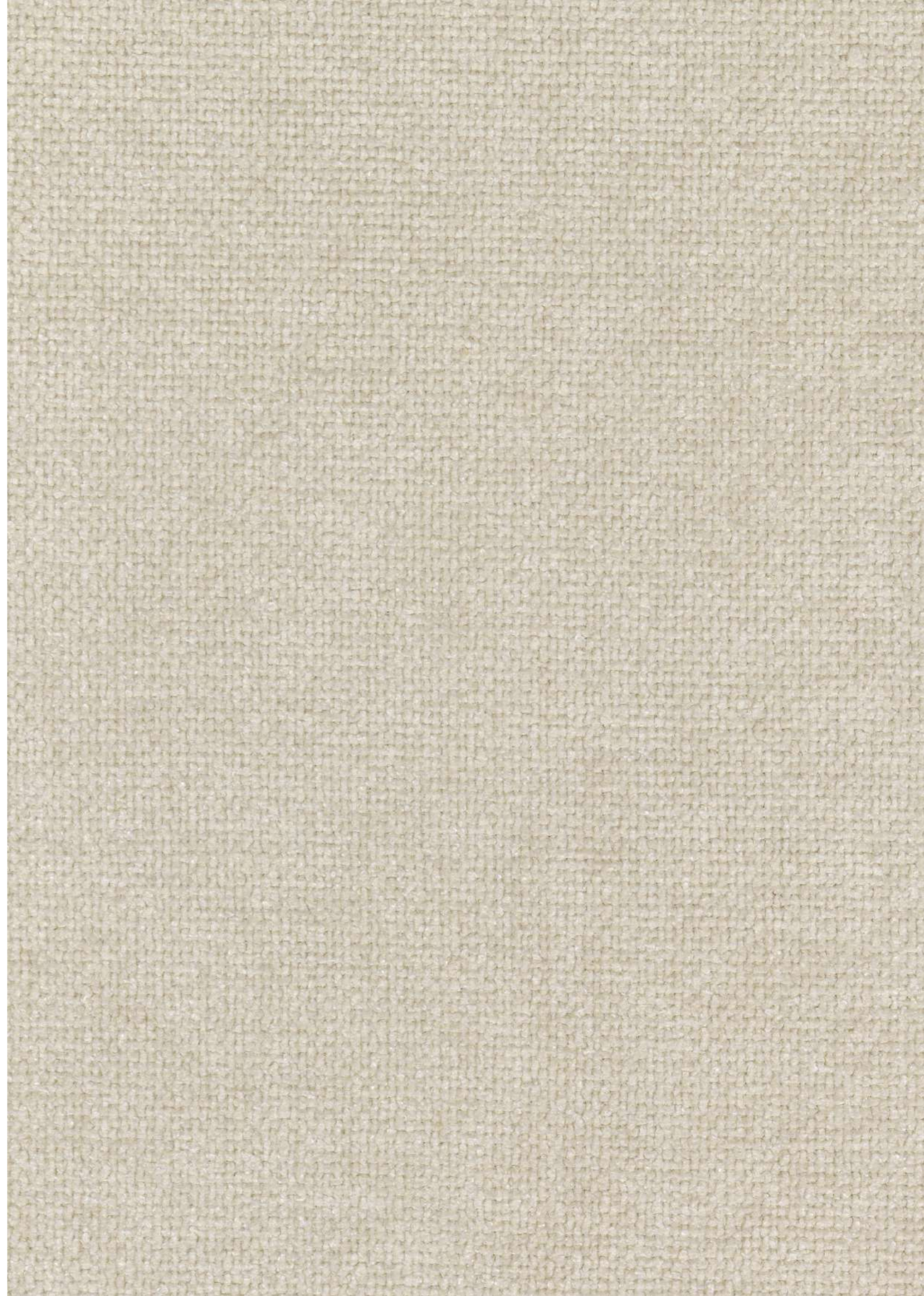


0008

TECHNICAL INFORMATION

Composition 50% linen 35% cotton 15% viscose, Width Approx. 140 cm, Weight 1,010 g/lin. m, Repeat Approx. 0/0 cm, Martindale 60,000, Pilling 5 (ISO 1-5), Lightfastness 5-6 (ISO 1-8)
Fire test: BS 5852 crib 5 with treatment · BS 5852 part 1 · EN 1021-1/2 · US Cal. 117-2013 with Cal. 117 compliant interliner · IMO FTP Code 2010 Part 8
Fastness to Rubbing: 4 (Dry) 3-4 (Wet), Seam Slippage 1 mm (warp), 2 mm (weft)

Please note that colours displayed may vary slightly from the actual product. Therefore, we recommend requesting samples before ordering.



PLAINS NARA



0009



0010



0011



0012



0013



0014



0015



0016

TECHNICAL INFORMATION

Composition 50% linen 35% cotton 15% viscose, Width Approx. 140 cm, Weight 1,010 g/lin. m, Repeat Approx. 0/0 cm, Martindale 60,000, Pilling 5 (ISO 1-5), Lightfastness 5-6 (ISO 1-8)
Fire test: BS 5852 crib 5 with treatment · BS 5852 part 1 · EN 1021-1/2 · US Cal. 117-2013 with Cal. 117 compliant interliner · IMO FTP Code 2010 Part 8
Fastness to Rubbing: 4 (Dry) 3-4 (Wet), Seam Slippage 1 mm (warp), 2 mm (weft)

Please note that colours displayed may vary slightly from the actual product. Therefore, we recommend requesting samples before ordering.



PLAINS BASILE

Linen cloth with a vintage character.



Crème



Naturel

TECHNICAL INFORMATION

Type - Plains - Fibres douces, Utilisation - Intensive use, Martindale >40.000 T, Composition - 60 % Viscose 34 % Linen 4 % Cotton 2 % Polyamide, Width 135 cm, Weight 999 gr / m²
Certifications: BS5852 Cigarette & match test, EN1021-1-2 in conjunction with suitable combustion modified foam, NFPA 260-Class 1
Notes & Informations: Reinforced stitching recommended to avoid fraying at seams

Please note that colours displayed may vary slightly from the actual product. Therefore, we recommend requesting samples before ordering.





TERMS AND CONDITIONS OF SALE AND DELIVERY

1. APPLICATIONS

These general conditions of sale and delivery (“General Conditions”) govern the methods and the conditions of sale of the products (the “Products”) of BOON_ORIGIN SAS (B_O), owner of the BOON_EDITIONS SAS brand & BOON_ROOM SAS, with registered office in 3 Boulevard de Belleville, 75011 Paris, France, with VAT number FR34894242296, and regulate the relations between B_O and the Client (B_O and the Client jointly also the “Parties”), relating to the supply of the Products sold by B_O, as well as the related services functional to their sale, such as transport, delivery and/or shipment (the “Services”).

These General Conditions, together with the Order, the annexes and the documentation containing specific provisions relating to the sale of the Products, and any Services functional to the same, are an integral and substantial part of the Order itself and with it constitute the contract aimed at regulating the relations between the Parties (hereinafter the “Agreement”).

Any modification of the Contract after its conclusion must be confirmed by an act signed by both Parties.

In the event of a conflict between the General Conditions and the Order, the first will prevail, unless expressly waived by the Parties in the Order.

By signing the Contract, the Client expressly renounces the application of its general and/or conditions, if any.

2. ACCEPTANCES

The Order will become binding between the Parties once accepted by B_O by written communication to be sent in compliance with the provisions of art. 3. B_O reserves the right to accept, or not, any Order received without a time limit for acceptance, by the order confirmation.

Any changes contained in the order confirmation will be considered a change to the original Order and must be accepted by the Client in writing, in compliance with the provisions of art. 3. If the Client does not accept the change to the Order within 3 (three) days of sending it, the change will be deemed accepted and the Order will be considered confirmed as amended by B_O.

3. NOTICES

Communications between the Parties must be in writing to the known addresses and in the manner expressly indicated in the Order. The Parties undertake to promptly report any changes.

4. DELIVERY TERMS

The Products are intended to be delivered with their availability, to the Client or the carrier, at the headquarters, warehouse or other place indicated by B_O (Incoterm EXW - Ex Works). Delivery costs will be borne by the Client unless otherwise agreed. The supply of the Products takes place with promptness, subject to stock availability and the possibilities of production and delivery. Any delivery terms provided in the order confirmation are purely indicative and not binding for B_O.

The delivery terms are however suspended due to unforeseeable circumstances and force majeure and for any fact attributable to third parties. In any case, the Client will not be able to withdraw from the Contract and the delivery will be made as soon as the impediment ceases.

5. FEE

The fee for the Products and any Services is the amount (or amounts) indicated in the Order and/or in its annexes.

6. PAYMENTS

The payment methods and related terms are specified in the B_O order confirmation; otherwise, payments must be made before the Products are made available to the Client, as indicated in the art. 4. In the event of late payments with respect to the agreed deadline, interest will be automatically due to B_O according to French law article L441-3 du Code de Commerce; a €40 compensation fee and late payment interest of 3 times the rate legal interest rate.

7. ORDER MODIFICATIONS AND CANCELLATIONS

Any modifications and/or cancellations of the Order must be received by B_O within 2 (two) working days from of dispatch of the Order, and in any case, before B_O sends the relative order confirmation referred to in art. 2. Any modifications and/or cancellations will be valid only if accepted in writing by B_O, which may, in any case, request a refund for the costs arising from the modifications and/or cancellations of the Order.

8. DAMAGES CAUSED BY THIRD PARTIES

If the delivery has been made through third parties (shipper/courier), the Client is obliged to check the number of packages and their conditions at the time of delivery and to prove any visible damage to the shipper/courier who is directly responsible for it, and therefore to refuse delivery and communicate the incident to B_O within 12 (twelve) hours from the delivery.

In any case, B_O cannot be responsible for any damage resulting from the transport of the Products by third parties.

9. RETURNS

With reference to the previous article, refunds will be accepted only if authorized in writing by B_O. The returning costs of the Products will be borne by the Client.

The Client is responsible for returning the Product in its original packaging and, should it no longer own it, it will have to provide a new packaging at its own expense. It is the Client's responsibility to pack the product with care. The Client will be held responsible for any damage that may arise from the return and that had not been reported by the same as a reason for the return.

Returned and non-defective products will be refunded considering the price paid and reducing it by 30%.

10. CLAIMS

Claims means all exceptions made by the Client that refer to the quality and composition of the Products. Upon receipt of the Products, the Client must verify or have their compliance verified. The Client cannot assert that the Products are not compliant if he/she does not communicate the defect to B_O within 5 (five) days of receiving the Order. The communication must be made in writing in compliance with the procedures set out in art. 3 and must be justified in detail. In the event of any hidden defects, the Client must report them within 5 (five) days of their discovery. Failure to comply with these terms results in the Client forfeiture of the right to return the Products, as well as the guarantee referred to in art. 19. In any case, returns of goods are not accepted unless expressly authorized in writing by B_O. Products with proven manufacturing defects will, at B_O ‘s discretion, be replaced or repaired. B_O assumes no liability for Products that have caused damage because of their use does not comply with what is indicated by the same.

11. LIMITATIONS OF LIABILITY

Except in cases of wilful misconduct or gross negligence, any liability of B_O will be limited to the amount paid by the Client for the purchase of the Products, as indicated in the Order.

12. DEFERRED DELIVERIES

B_O reserves the right to suspend deliveries, postpone them and/or cancel them in the event of non-fulfilment, even partial, of the obligations assumed by the Client by signing the Order. Even in the event of cancellation of the delivery by B_O due to non-fulfilment by the Client, B_O has the right to obtain the amount referred to in the Order, even if the Client is no longer interested in the Product/Products covered by the Contract.

13. DELIVERIES - TRANSPORTS EX-WORKS

The delivery is valid for all purposes, even by courier. The Client must check the weight of the goods, the number of packages and the state of the packaging before collection and makes the necessary claims to the courier, the latter being responsible for any damage, which cannot in any way be attributed to B_O.

14. PACKAGING

The standard product packaging is included in the sale price and must be kept by the Client for the duration of the warranty period.

15. STORAGE

The storage of the goods in B_O warehouse is free for the Clients only for the first 30 (thirty) days. Starting from the thirty-first day of storage, the Client will be charged a cost of 4€/m³ per day.

16. PRICE LIST VALIDITY

The price list replaces all previous quotations, in any form applied or established, and can be changed at any time and without notice. It is the client's responsibility to inquire about any changes. The prices indicated in the price list are in EURO and do not include VAT.

17. DIMENSIONS

Products dimensions are expressed in “centimetres” and refer to the total dimensions of the Products, including any protrusions. Dimensions, drawings, and descriptions are to be considered updated on the date of preparation of the catalogue. All Products are realized and assembled by hand; therefore, the dimensions may be different from those indicated both in the catalogue and in the Contract.

18. AUTHENTICITY

B_O guarantees the authenticity of its Products only if they are purchased from authorized dealers. BOON_EDITIONS manufactures its products using precious and exclusive materials. All B_O products are 100% Made in Italy, France, Belgium and/or Georgia, as indicated in the price list next to each specific product.

19. WARRANTY

B_O guarantees the products for 1 (one) year from the delivery date. This warranty applies only if the Client has carried out correct use and excellent maintenance and conservation of the Product and has not modified or repaired it, without the prior express written consent of B_O, by professionals indicated.

20. RESERVE OF OWNERSHIP

B_O will remain the owner of the product until the collection of the total amount agreed in the Contract. B_O reserves the right to take legal action, in the event of non-payment, also to obtain the return of the Product. In this case and at B_O request, the Client undertakes to return any unpaid Product, at his/her own expense. If the Client has paid only part of the amount agreed in the Contract, B_O will be entitled to obtain the goods return and to withhold the sums collected as a penalty, without prejudice to the right to obtain adequate compensation for any further damages and/or expenses incurred for the return of the Product.

21. CUSTOMIZED PRODUCT

B_O reserves the right to accept, at its discretion, Orders with measures or finishes not provided for in the catalogue, for which will be applied a surcharge calculated and communicated to the Client in compliance with the times strictly necessary to carry out due technical and aesthetic evaluations.

22. APPLICABLE LAW AND JURISDICTION

These General Conditions are governed by the French law, with express exclusion of the 1980 Vienna Convention on the International Sale of Goods. For the convenience of the Parties, this Agreement is drawn up in two languages: in English & French. In the event of a dispute, the French text is the only one that will be authentic. The Court of Paris shall have exclusive jurisdiction over any dispute relating, for any reason whatsoever, both contractual and non- contractual, to the sale of the Products by B_O.

23. WARNINGS

23.1 MATERIALS

The Products may acquire slight variations (for example for oxidation): these elements must be considered physiological and cannot be considered defects subject to dispute. In the event of integration of the Order with additional Products and having the same finishes and characteristics, B_O does not guarantee the identical colour tone and/or the Products, as they are made by hand. B_O, as part of the development of new business strategies and at its sole discretion, reserves the right to change the design, materials, and finishes, to improve the Product, without prior notice, or after consulting with the Client.

23.2 FABRIC

The coverings in fabric and leather could present colour variations, may show variations in shades between the same Products, due to their handmade production; therefore, B_O assumes no responsibility for any colour differences. All the measurements shown refer to plain fabrics without rapport, 140 cm high.

23.3 LACQUERING

The colours of all samples and renders for lacquering of woods, glasses and metals are only indicative. B_O cannot guarantee that the colours will remain constant over time; the Client accepts these possible variations. The finishing in wood could present differences in veins and colours over time because of the wood's maturation.

23.4 FIBERGLASS

The colours of all samples and renders for fiberglass are only indicative. B_O cannot guarantee that the colours will remain constant over time, the Client accepts these possible variations.

23.5 BRASS

Products contain oxidized brass, and its patina should be considered an aesthetic value. B_O cannot guarantee that the oxidation process will stay constant in the realization of the Products and over time; the Client accepts these possible variations.

23.6 COPPER

Products contain oxidized copper, and its patina should be considered an aesthetic value. Not being possible to guarantee that the oxidation process will stay constant in the realization of the Products and over time, the Client accepts these possible variations.

23.7 MARBLE

One of the marble's characteristics is to have different veins and colours as a result of the different marble blocks used. Different kinds of marble can be used with a personalized quotation.

23.8 SAMPLES

The materials samples could be subject to natural changes due to wear and tear. For this reason, samples must be considered just as an indication and, if necessary, they could be modified based on B_O's necessities.

Date:

Client:

Signature:

© All right reserved **BOON_EDITIONS**

CONTACT THE **_EDITIONS**

VISITORS & SHOWROOM

BOON_ROOM
9 Rue de Lesdiguières
75004 Paris France

ENQUIRES

Info@boon-editions.com
info@boon-room.com

+33 (0)9 67498780

HEADQUARTERS

BOON_EDITIONS
3 Boulevard de Belleville
75011 Paris France

TVA n° FR26897715637

www.boon-editions.com | www.boon-room.com

All rights reserved © BOON_ORIGIN SAS Group.

