

A minimalist interior scene with a large, curved, light-colored wall on the left. The floor is a dark, textured material. Two pieces of upholstered furniture are on the floor: a small, rounded, light-colored piece on the left and a larger, more complex, light-colored piece on the right. The lighting is soft and even, creating a calm and modern atmosphere.

BOON_EDITIONS

UPHOLSTERY CATALOGUE | EDITION N° 1 BY PIETER MAES

A close-up photograph of light beige leather upholstery. The image shows two distinct double-stitched seams, one curving across the top and another running horizontally across the middle. The leather has a subtle texture and slight variations in tone, suggesting a high-quality material. The lighting is soft, highlighting the contours of the stitching.

UPHOLSTERY SELECTION

The **BOON_EDITIONS** are available in a large selection of fabrics and leathers from some of the most highly acclaimed manufacturers of design textiles, who create high quality contemporary leather, textiles and textile-related products for private and public spaces. The fabric and leather selection reflect the **BOON_EDITIONS** ambition to push the aesthetic, technological and artistic boundaries and are characterized by simplicity, colour and creativity.

BOON_EDITIONS **ALPACA**

EXCLUSIVE

The BOON_EDITIONS EXCLUSIVE upholstery selection, where luxury meets individuality. An exquisite upholstery offering that combines unparalleled comfort with personalised aesthetics. Crafted with precision and care, this premium Alpaca Velvet, renowned for its superior quality, exceptional softness, and durability, offers a unique opportunity for personalisation through our customised colour option developed by our esteemed Colour Laboratory.

For the customised colour option, kindly submit a sample of the requested colour, either in the form of a RAL reference or another provided sample. The colour development process by our renowned experts takes about 2-6 weeks to ensure precision and accuracy in achieving your desired hue. This bespoke service allows for the creation of your own unique colour, tailored to meet your specific vision.

TECHNICAL INFORMATION

Type - Velvet / Hairy fabric, Utilisation - Normal use, Composition - 100% Alpaca, Width 140 cm, Weight 450 gr / m²

Please note that colours displayed may vary slightly from the actual product. Therefore, we recommend requesting samples before ordering.



BOON_EDITIONS MOHAIR

EXCLUSIVE

The BOON_EDITIONS EXCLUSIVE upholstery selection, where luxury meets individuality: a pinnacle of luxury and customisation. Crafted with precision and care, this exquisite premium Angora Mohair Velvet, renowned for its superior quality, sheen, and durability, offers a unique opportunity for personalisation through our customised colour option.

For the customised colour option, kindly submit a sample of the requested colour, either in the form of a RAL reference or another provided sample. The colour development process by our renowned experts takes about 2-6 weeks to ensure precision and accuracy in achieving your desired hue. This bespoke service allows for the creation of your own unique colour, tailored to meet your specific vision.

TECHNICAL INFORMATION

Type - Angora Mohair Velvet, Utilisation - Normal use, Composition - 100 % Angora Mohair, Width 135 cm, Weight 750 gr / m²

Please note that colours displayed may vary slightly from the actual product. Therefore, we recommend requesting samples before ordering.



BOUCLÉ AGNES

BY PIERRE FREY

Made with long, noble fibers that have been brushed after weaving, the loops of AGNES confer elegant restraint with their delicacy and incomparable softness.



NATUREL

TECHNICAL INFORMATION

Type - Hairy fabrics Bouclé fabrics Fibres douces, Utilisation - Normal use, Martindale > 25 000 T, Composition - 60 % Mohair 21 % Cotton 15 % Wool 4 % Polyester, Width 120 cm - 47,24 inch, Weight 1404 gr / m²
Certifications: BS5852 Cigarette & match test, EN1021-1-2 in conjunction with suitable combustion modified foam, NFPA 260-Class 1, CRIB 5 in conjunction with suitable combustion modified foam
Notes & Informations: Patina with use, Cutting for approval recommended, Boucle 100% wool, Reinforced stitching recommended to avoid fraying at seams

Please note that colours displayed may vary slightly from the actual product. Therefore, we recommend requesting samples before ordering.



BOUCLÉ ELLE

BY KVADRAT

A curled bouclé fabric, Elle drapes and curves around furniture like an elegant designer coat. The spun bouclé yarn created by blending wool, viscose and acrylic gives the surface a soft tactility. During the subsequent dyeing the yarns take the colour differently, creating captivating shifts within the same tones. This effect and a slight sheen from the acrylic blend bring life to the voluminous textured bouclé surface. Elegant neutrals range from oyster, coffee, pearl white, light ivory and caramel to cactus green, concrete grey, nutmeg, mud brown and ink. Taking cues from fashion, brighter contrast colours are sunset orange, rust, plum and aqua.



0150



0180



0200



0220



0230



0280



0290



0350

TECHNICAL INFORMATION

Composition 25% cotton 20% viscose 20% polyacrylic 20% new wool 15% nylon, Pattern - Solid, Width Approx. 140 cm, Weight 900 g/lin. m, Repeat Approx. 0/0 cm, Martindale 70,000, Pilling 4-5 (ISO 1-5), Lightfastness 6-7 (ISO 1-8)
Fire test: US Cal. Bull. 117-2013 · BS 5852 crib 5 with treatment · EN 1021-1/2 · BS 5852 part 1 · IMO FTP Code 2010 Part 8
Fastness to Rubbing: 4-5 (Dry) 3 (Wet), Seam Slippage 7 mm (warp), 2 mm (weft)

Please note that colours displayed may vary slightly from the actual product. Therefore, we recommend requesting samples before ordering.



BOUCLÉ ELLE

BY KVADRAT



0390



0480



0680



0950

TECHNICAL INFORMATION

Composition 25% cotton 20% viscose 20% polyacrylic 20% new wool 15% nylon, Pattern - Solid, Width Approx. 140 cm, Weight 900 g/lin. m, Repeat Approx. 0/0 cm, Martindale 70,000, Pilling 4-5 (ISO 1-5), Lightfastness 6-7 (ISO 1-8)
Fire test: US Cal. Bull. 117-2013 · BS 5852 crib 5 with treatment · EN 1021-1/2 · BS 5852 part 1 · IMO FTP Code 2010 Part 8
Fastness to Rubbing: 4-5 (Dry) 3 (Wet), Seam Slippage 7 mm (warp), 2 mm (weft)

Please note that colours displayed may vary slightly from the actual product. Therefore, we recommend requesting samples before ordering.

BOUCLÉ EVEREST

BY METAPHORES

This cashmere bouclé is in a world of its own. Exceptional in both the quality of its yarn and the finesse of its weaving, it evokes the vaporous, downy mien of clouds. Its fancy yarn provides it with volume, as well as irregularities that give it added richness. A prodigious tactile experience, an invitation to curl up in comfort.



CHANTILLY



VIGOGNE



BRUME

TECHNICAL INFORMATION

Type - Cashmere Bouclé, Utilisation - Normal use, Martindale 25000 T, Composition - 36% ALPAGA / 44% CACHEMERE / 10% VIRGIN WOOL / 10% POLYAMID, Width - 130 cm, Weight - 720 g/ml, Pattern - Plain/Tone on tone

Please note that colours displayed may vary slightly from the actual product. Therefore, we recommend requesting samples before ordering.



BOUCLÉ JUDITH

BY PIERRE FREY

A coarse linen weave for a very natural bouclette effect.



CREME



BEIGE

TECHNICAL INFORMATION

Type - Bouclé fabrics Plains Fibres douces, Utilisation - Normal use, Martindale > 25 000 T, Composition - 79 % Wool 21 % Cotton, Width 124 cm - 48,81 inch, Weight 1161 gr / m²
Certifications: EN1021-1-2, BS5852 Cigarette & match test, NFPA 260-Class 1, CRIB 5 in conjunction with suitable combustion modified foam

Notes & Informations: Reinforced stitching recommended to avoid fraying at seams

Please note that colours displayed may vary slightly from the actual product. Therefore, we recommend requesting samples before ordering.



BOUCLÉ LOUISON

BY PIERRE FREY

A thick wool bouclette for a chic but natural upholstery look.



CREME



PERLE

TECHNICAL INFORMATION

Type - Bouclé fabrics - Plains - Fibres douces, Utilisation - Intensive use, Martindale > 25 000 T, Composition - 41 % Wool 39 % Alpaca 17 % Cotton 3 % Acrylic, Width 133 cm - 52,36 inch, Weight 1328 gr / m²
Certifications: EN1021-1-2, BS5852 Cigarette & match test, NFPA 260-Class 1, CRIB 5 in conjunction with suitable combustion modified foam

Notes & Informations: Reinforced stitching recommended to avoid fraying at seams

Please note that colours displayed may vary slightly from the actual product. Therefore, we recommend requesting samples before ordering.



BOUCLÉ SOLANGE

BY PIERRE FREY

With fine, delicate loops in Peruvian alpaca wool, SOLANGE has an incomparably luxurious feel.



NATUREL



SOURIS

TECHNICAL INFORMATION

Type - Bouclé fabrics - Plains - Fibres douces, Utilisation - Moderate use, Martindale < 15.000 T, Composition - 41 % Alpaca 35 % Cotton 7 % Wool 7 % Acrylic 5 % Silk 5 % Linen, Width 136 cm - 53,54 inch, Weight 816 gr / m²
Certifications: BS5852 Cigarette & match test, EN1021-1-2 in conjunction with suitable combustion modified foam, NFPA 260-Class 1, CRIB 5 in conjunction with suitable combustion modified foam
Notes & Informations: Cutting for approval recommended, Boucle 100% wool, Reinforced stitching recommended to avoid fraying at seams

Please note that colours displayed may vary slightly from the actual product. Therefore, we recommend requesting samples before ordering.



VELVET & VELOUR **BOLD**

BY PIERRE FREY

India Mahdavi has created a collection for Pierre Frey that focuses on velvet, a favorite material invented in Kashmir and known as “swansdown”; it was first used in Iran and later imported to Europe. BOLD is a mohair velvet with an incomparable softness. A close-trimmed nap gives this beautiful plain fabric density and unique comfort



DUNE



PLAITRE



FOG



MUD



ARMY



CIGARE



FOUGERE



FOREST

TECHNICAL INFORMATION

Type - Plains - Velvets, Utilisation - Intensive use, Martindale 100.000 T, Composition - 63 % Mohair 37 % Cotton, Width 140 cm, Weight 910 gr / m²

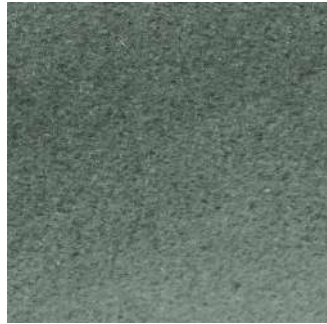
Certifications: EN1021-1-2, BS5852 Cigarette & match test, NFPA 260-Class 1, CRIB 5 in conjunction with suitable combustion modified foam

Notes & Informations: Can be embossed, Pile 100% mohair

Please note that colours displayed may vary slightly from the actual product. Therefore, we recommend requesting samples before ordering.



VELVET & VELOUR BOLD



CELADON



GOD SAVE THE QUEEN

TECHNICAL INFORMATION

Type - Plains - Velvets, Utilisation - Intensive use, Martindale 100.000 T, Composition - 63 % Mohair 37 % Cotton, Width 140 cm, Weight 910 gr / m²

Certifications: EN1021-1-2, BS5852 Cigarette & match test, NFPA 260-Class 1, CRIB 5 in conjunction with suitable combustion modified foam

Notes & Informations: Can be embossed, Pile 100% mohair

Please note that colours displayed may vary slightly from the actual product. Therefore, we recommend requesting samples before ordering.

VELVET & VELOUR CASHFUR

BY LORO PIANA

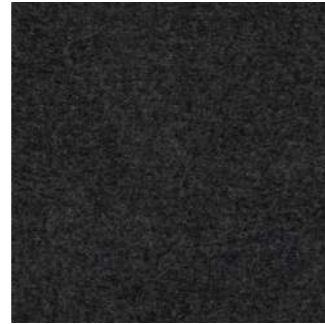
Cashfur is an original interpretation of one of our signature materials: cashmere. It combines a strand of cashmere produced using specially selected fibre, and silk, and is crafted on circular knitting looms to create its distinctive fur-like consistency. Its natural softness is accentuated by delicate finishing processes. Cashfur comes in the natural white shade of cashmere, or in a range of colours.



BIANCORE



KASHA



MARENGO



MAJESTIC BLUE

TECHNICAL INFORMATION

Type - Cashmere, Utilisation - Intensive use, Martindale 30.000 T, Composition - 85%-Cashmere 15%-Silk, Width 145 cm, Weight 830 gr / ml

Please note that colours displayed may vary slightly from the actual product. Therefore, we recommend requesting samples before ordering.



VELVET & VELOUR CASHMERE RAW

BY LORO PIANA

Cashmere Raw is a unique fabric that is truly one of a kind, based on cashmere used in its natural shade, or rather shades. The underfleece of cashmere goats, which is combed to gather the fibre, occurs in three shades: white, brown and grey. The undyed fibre has been masterfully combined to create these distinctive looks, with each batch truly unique.



KASHA



DARK BROWN



SHADED WHITE



BLEND ZEN

TECHNICAL INFORMATION

Type - Cashmere, Utilisation - Intensive use, Martindale 16.500 T, Composition - 100%-Cashmere, Width 150 cm, Weight 580 gr / ml

Please note that colours displayed may vary slightly from the actual product. Therefore, we recommend requesting samples before ordering.



VELVET & VELOUR INCAS

BY LORO PIANA

Incas is a soft, enveloping fabric in Alpaca Suri and wool. Suri is the rarest breed of alpaca, and produces an incredibly soft, smooth, lustrous fibre. For Incas, alpaca is used on the right side, while the reverse is wool. The resulting material is invitingly tactile, presenting a nap surface raised using gentle finishing techniques. For upholstery, curtains and decor.



TAUPE



CAFE' NOIR



BIANCORE



MARTORA

TECHNICAL INFORMATION

Type - Weave, Utilisation - Intensive use, Martindale 8 000, Composition - 75%-Alpaca 25%-Virgin Wool, Width 150 cm, Weight 680gr /ml

Please note that colours displayed may vary slightly from the actual product. Therefore, we recommend requesting samples before ordering.



VELVET & VELOUR SHERPAS

BY LORO PIANA

Sherpas is an iconic cashmere fabric designed for upholstery, curtains and décor, delivering the natural softness, inviting touch and welcoming warmth of cashmere. The mélangé shades are refined and versatile.



BLEND ZEN



SIATUNGA GOLD



SIATUNGA



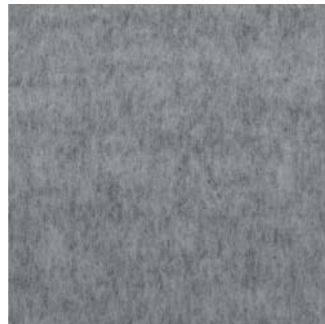
SAMPRASS



DARK MARENGO



MARENGO



LIGHT MARENGO



GASCONE

TECHNICAL INFORMATION

Type - Cashmere , Utilisation - Intensive use, Martindale 10.000 T, Composition - 100%-Cashmere, Width 150 cm, Weight 480 gr / ml

Please note that colours displayed may vary slightly from the actual product. Therefore, we recommend requesting samples before ordering.



VELVET & VELOUR SHERPAS

BY LORO PIANA



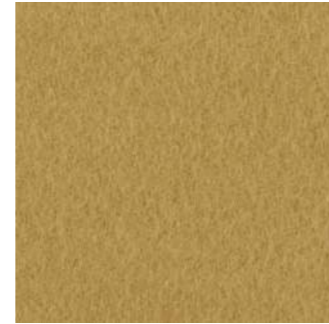
MUSCHIO



OLIVO



GINGER



GINGEMBAR



PIMENT DOUX



MAJESTIC BLUE



LOVAT

TECHNICAL INFORMATION

Type - Cashmere , Utilisation - Intensive use, Martindale 10.000 T, Composition - 100%-Cashmere, Width 150 cm, Weight 480 gr / ml

Please note that colours displayed may vary slightly from the actual product. Therefore, we recommend requesting samples before ordering.



VELVET & VELOUR SWEET HEART

BY METAPHORES

This quality seduces by the richness and the softness of its hand.



ECRU



CHAMOIS



FAUVE



HEART NOIR

TECHNICAL INFORMATION

Type - Velvets, Utilisation - Intensive use, Martindale 50.000 T, Composition - 15% ALPAGA / 27% COTTON / 24% WOOL / 15% POLYAMID / 9% POLYESTER / 10% SILK, Width 140 cm, Weight 930 gr / ml

Please note that colours displayed may vary slightly from the actual product. Therefore, we recommend requesting samples before ordering.



VELVET & VELOUR TEDDY MOHAIR

BY PIERRE FREY

Very attractive velvet with long mohair calling to mind our childhood 'Teddy bear'.



IVOIRE



CREME



MIEL



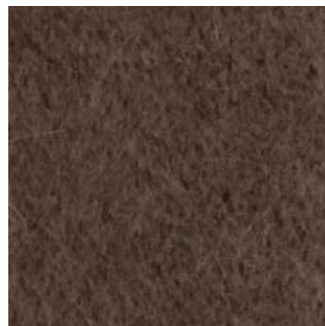
TAUPE



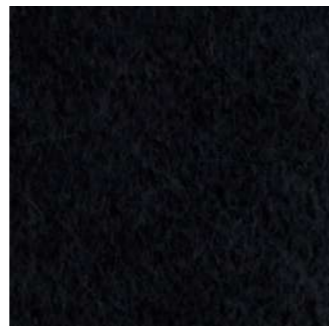
MOKA



CAFE



GRIS SOURIS



NOIR

TECHNICAL INFORMATION

Type - Plains - Velvets, Utilisation - Intensive use, Martindale 85.000 T, Composition - 65 % Mohair 35 % Cotton, Width 141 cm, Weight 1270 gr / m²

Certifications: EN1021-1-2, BS5852 Cigarette & match test, CLASSE UNO, NFPA 260-Class 1, CRIB 5

Notes & Informations: Can be embossed, Pile 100% mohair

Please note that colours displayed may vary slightly from the actual product. Therefore, we recommend requesting samples before ordering.



VELVET & VELOUR TEDDY MOHAIR

BY PIERRE FREY



MARINE



MOUTARDE



OLIVE



MOUSSE



ACAJOUR



CARAMEL



GRAMINEES



BAMBI

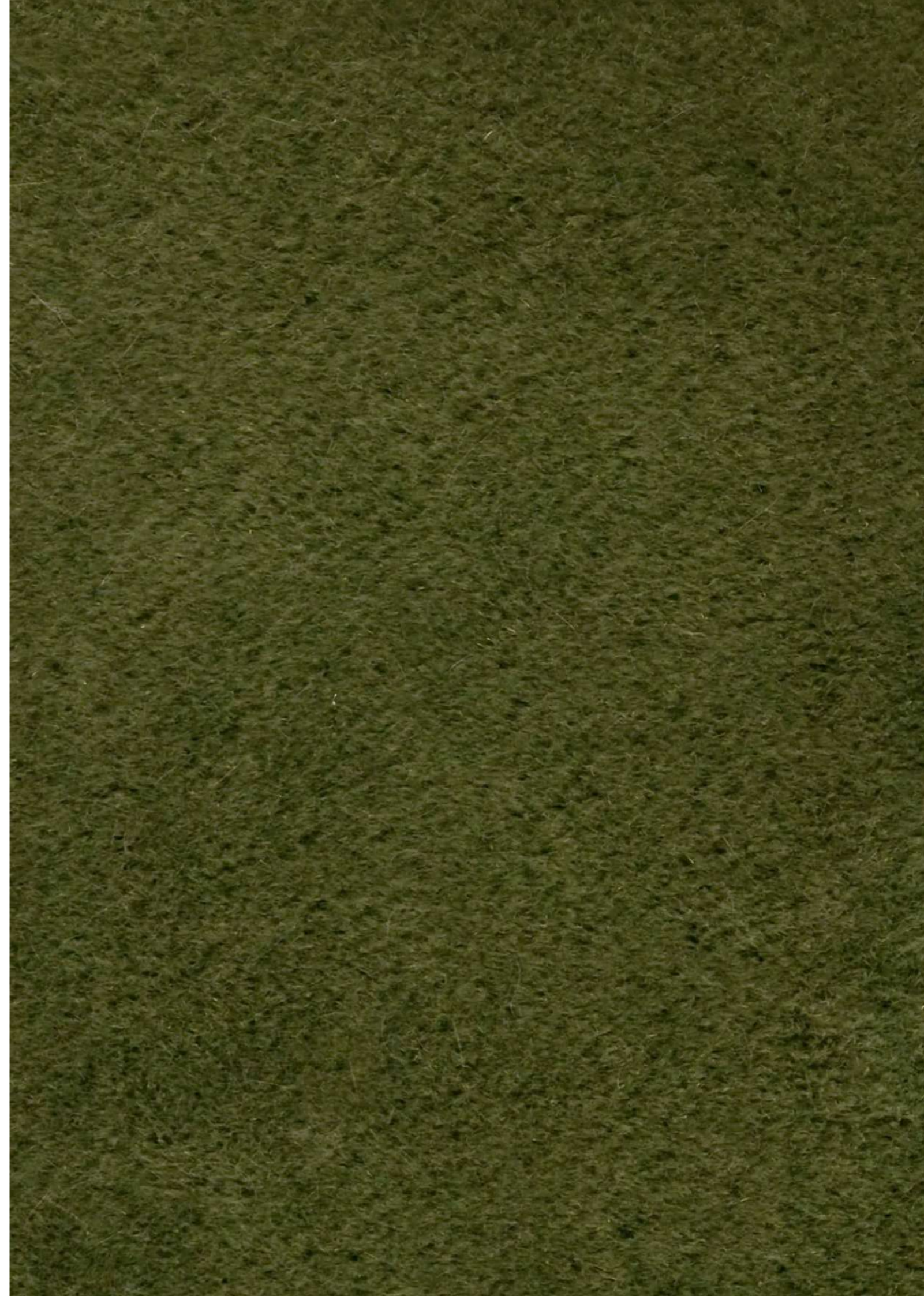
TECHNICAL INFORMATION

Type - Plains - Velvets, Utilisation - Intensive use, Martindale 85.000 T, Composition - 65 % Mohair 35 % Cotton, Width 141 cm, Weight 1270 gr / m²

Certifications: EN1021-1-2, BS5852 Cigarette & match test, CLASSE UNO, NFPA 260-Class 1, CRIB 5

Notes & Informations: Can be embossed, Pile 100% mohair

Please note that colours displayed may vary slightly from the actual product. Therefore, we recommend requesting samples before ordering.



VELVET & VELOUR TEDDY MOHAIR

BY PIERRE FREY



PERLE



ELEPHANT



HERISSON



DUNE



TOURTERELLE



PLUME



ECORCE



NACRE

TECHNICAL INFORMATION

Type - Plains - Velvets, Utilisation - Intensive use, Martindale 85.000 T, Composition - 65 % Mohair 35 % Cotton, Width 141 cm, Weight 1270 gr / m²

Certifications: EN1021-1-2, BS5852 Cigarette & match test, CLASSE UNO, NFPA 260-Class 1, CRIB 5

Notes & Informations: Can be embossed, Pile 100% mohair

Please note that colours displayed may vary slightly from the actual product. Therefore, we recommend requesting samples before ordering.



VELVET & VELOUR TEDDY MOHAIR

BY PIERRE FREY



SABLE



CHOCO

TECHNICAL INFORMATION

Type - Plains - Velvets, Utilisation - Intensive use, Martindale 85.000 T, Composition - 65 % Mohair 35 % Cotton, Width 141 cm, Weight 1270 gr / m²

Certifications: EN1021-1-2, BS5852 Cigarette & match test, CLASSE UNO, NFPA 260-Class 1, CRIB 5

Notes & Informations: Can be embossed, Pile 100% mohair

Please note that colours displayed may vary slightly from the actual product. Therefore, we recommend requesting samples before ordering.



VELVET & VELOUR TENOR

BY BONVALLET

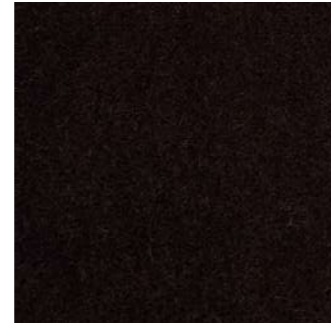
A Angora Mohair Fabric.



DARK NUIT



EMERAUDE



MEHARI



COPPER LEAF

TECHNICAL INFORMATION

Composition Angora mohair, Width. 135 cm, Weight 750 gr / m²

Please note that colours displayed may vary slightly from the actual product. Therefore, we recommend requesting samples before ordering.



VELVET & VELOUR VIGGO

BY PIERRE FREY

Shimmer and softness are the principal qualities of this silk and cotton velvet with an incomparable feel. Presented in refined colors, it will find a place in both traditional and contemporary interiors. The very high quality of the cotton and silk threads chosen for this velvet capture light and reveal the full depth of the colors and their precious, glowing highlights. Careful attention has been paid to weave density, giving the fabric an exceptional feel that expresses the luxury of this velvet.



CREME



CRAIE



CARMEL



CACAO



BOIS



SOURIS



ELEPHANT



ARDOISE

TECHNICAL INFORMATION

Type - Plains - Velvets, Utilisation - Intensive use, Martindale >100.000 T, Composition - 88 % Cotton 12 % Silk, Width 142 cm, Weight 940 gr / m²

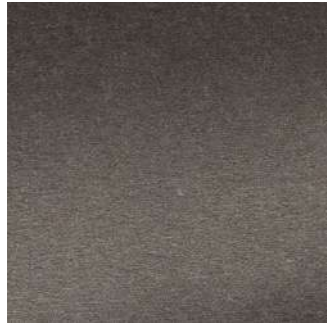
Certifications: BS5852 Cigarette & match test, EN1021-1-2 in conjunction with suitable combustion modified foam

Notes & Informations: Can be embossed, Silk and cotton pile

Please note that colours displayed may vary slightly from the actual product. Therefore, we recommend requesting samples before ordering.

VELVET & VELOUR VIGGO

BY PIERRE FREY



CHARBON



CACTUS



AMANDE

TECHNICAL INFORMATION

Type - Plains - Velvets, Utilisation - Intensive use, Martindale >100.000 T, Composition - 88 % Cotton 12 % Silk, Width 142 cm, Weight 940 gr / m²

Certifications: BS5852 Cigarette & match test, EN1021-1-2 in conjunction with suitable combustion modified foam

Notes & Informations: Can be embossed, Silk and cotton pile

Please note that colours displayed may vary slightly from the actual product. Therefore, we recommend requesting samples before ordering.

PLAIN BASILE

BY PIERRE FREY

Linen cloth with a vintage character.



CREME



NATUREL

TECHNICAL INFORMATION

Type - Plains - Fibres douces, Utilisation - Intensive use, Martindale >40.000 T, Composition - 60 % Viscose 34 % Linen 4 % Cotton 2 % Polyamide, Width 135 cm, Weight 999 gr / m²
Certifications: BS5852 Cigarette & match test, EN1021-1-2 in conjunction with suitable combustion modified foam, NFPA 260-Class 1
Notes & Informations: Reinforced stitching recommended to avoid fraying at seams

Please note that colours displayed may vary slightly from the actual product. Therefore, we recommend requesting samples before ordering.



PLAIN NARA

BY KVADRAT

This classic upholstery is given a new twist with a plain weave in viscose and linen chenille that gives a distinctive textured appearance. The rich and soft textile has a semi-dry handle with a lively and natural surface. Available in sixteen shades ranging from sophisticated neutrals to deep bold tones, Nara is a timeless upholstery textile.



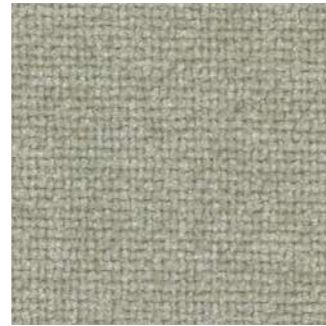
0006



0007



0008



0015



0005



0003



0004

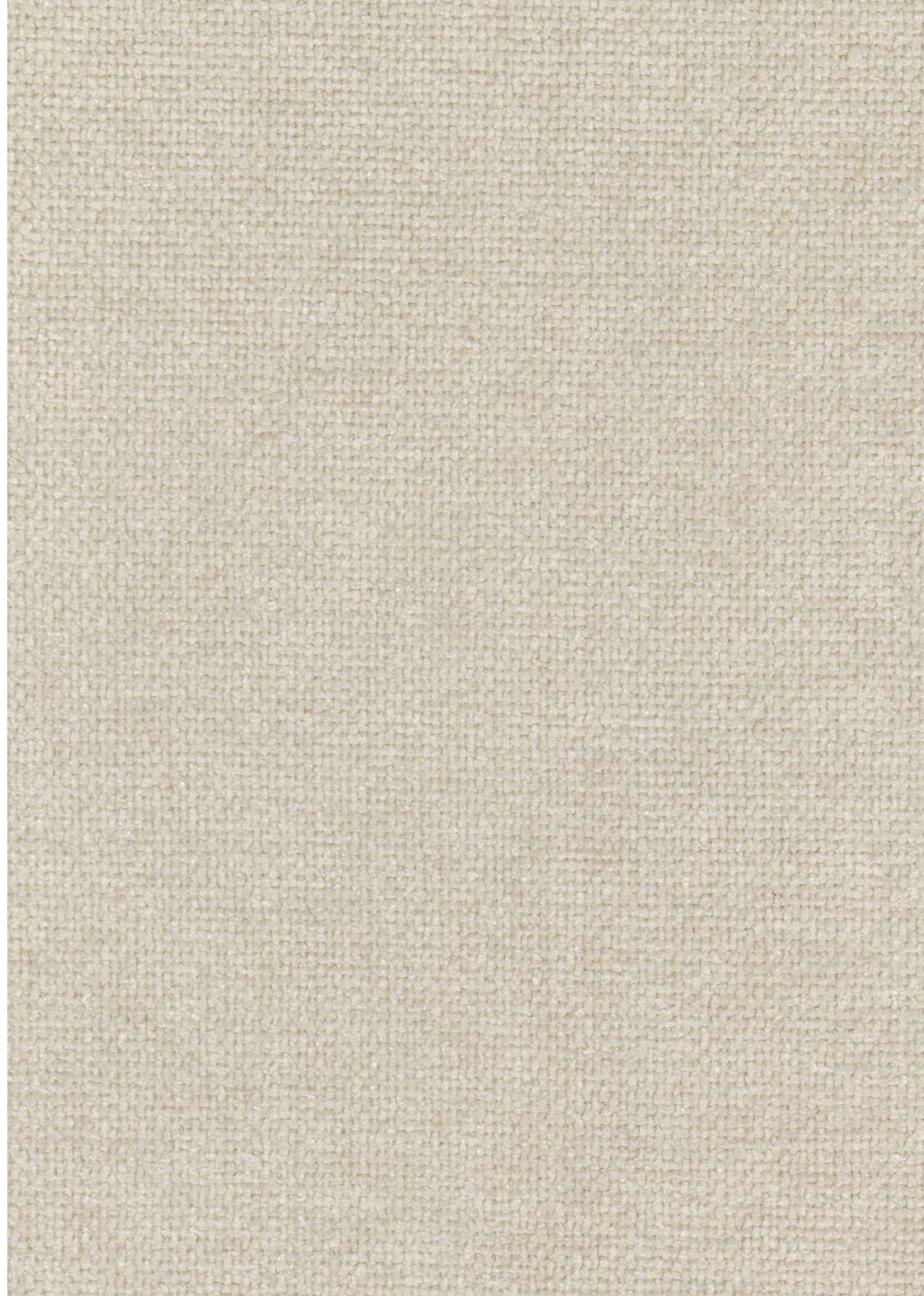


0014

TECHNICAL INFORMATION

Composition 50% linen 35% cotton 15% viscose, Width Approx. 140 cm, Weight 1,010 g/lin. m, Repeat Approx. 0/0 cm, Martindale 60,000, Pilling 5 (ISO 1-5), Lightfastness 5-6 (ISO 1-8)
Fire test: BS 5852 crib 5 with treatment · BS 5852 part 1 · EN 1021-1/2 · US Cal. 117-2013 with Cal. 117 compliant interliner · IMO FTP Code 2010 Part 8
Fastness to Rubbing: 4 (Dry) 3-4 (Wet), Seam Slippage 1 mm (warp), 2 mm (weft)

Please note that colours displayed may vary slightly from the actual product. Therefore, we recommend requesting samples before ordering.

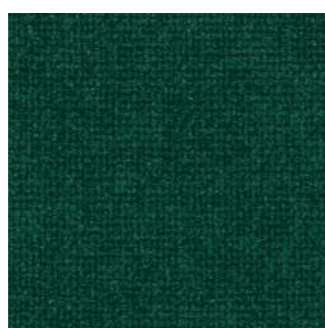


PLAIN NARA

BY KVADRAT



0009



0013



0011

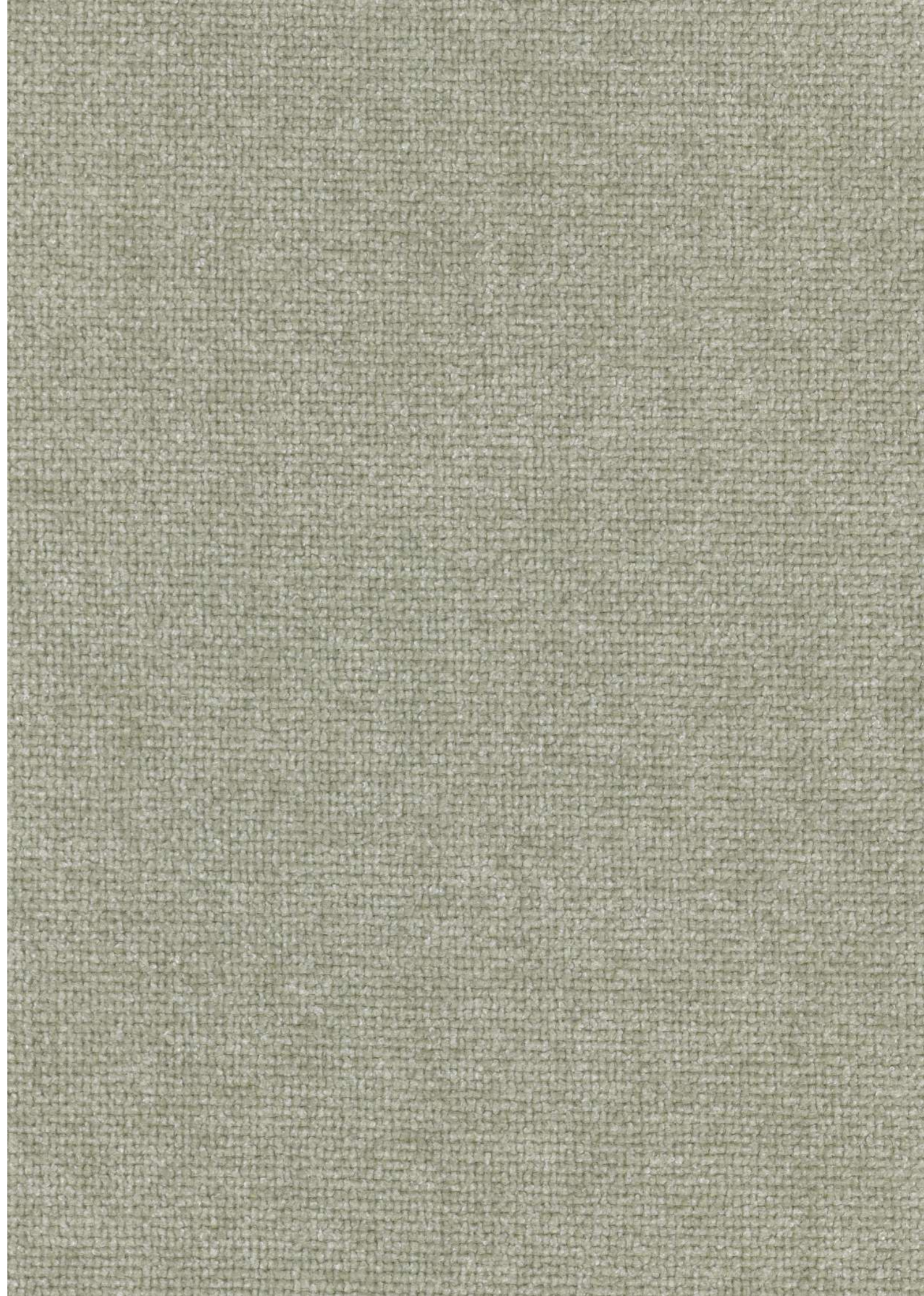


0012

TECHNICAL INFORMATION

Composition 50% linen 35% cotton 15% viscose, Width Approx. 140 cm, Weight 1,010 g/lin. m, Repeat Approx. 0/0 cm, Martindale 60,000, Pilling 5 (ISO 1-5), Lightfastness 5-6 (ISO 1-8)
Fire test: BS 5852 crib 5 with treatment · BS 5852 part 1 · EN 1021-1/2 · US Cal. 117-2013 with Cal. 117 compliant interliner · IMO FTP Code 2010 Part 8
Fastness to Rubbing: 4 (Dry) 3-4 (Wet), Seam Slippage 1 mm (warp), 2 mm (weft)

Please note that colours displayed may vary slightly from the actual product. Therefore, we recommend requesting samples before ordering.



PLAIN PULP

BY PIERRE FREY

A perfect illusion of genuine suede leather, this plain offers a good-quality alternative. The illusion provided by this extremely resistant fabric also extends to the hand, which is soft, dense and supple.



NEIGE



ECUME



SAND



BLE



KRAFT



GALET



ECORCE

TECHNICAL INFORMATION

Type - Plains, Utilisation - Intensive use, Martindale >25.000 T, Composition - 100 % Polyester, Width 140 cm, Weight 490 gr / m²
Notes & Informations: Reversible, Can be embossed

Please note that colours displayed may vary slightly from the actual product. Therefore, we recommend requesting samples before ordering.

LEATHER DIVINA

BY STOLTZ

Divina – Italian for ‘divine’ – is the finest that can be achieved in leather. A silky soft feel, exceptional transparency and, of course, 100% natural grain make this leather a true work of art. Colour variations within one hide, neck creases, insect bites and closed scars enhance the authenticity of this leather.



702

TECHNICAL INFORMATION

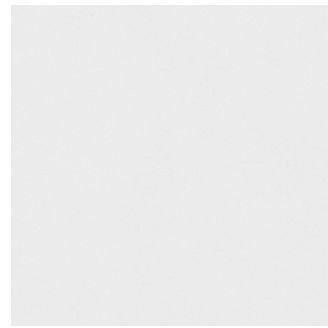
Composition: 100% Leather, Origin: European bullhides, Thickness: 1.4/1.6 mm, Treatment: pure aniline

Please note that colours displayed may vary slightly from the actual product. Therefore, we recommend requesting samples before ordering.

LEATHER ELMOESSENCE

BY ELMO

Elmoessence is a flat aniline with smooth and naked surface with no or little grain. The leather offers the highest comfort and the process allows all characteristics such as scars, insect bites and neck wrinkles to remain. When you think of the softest, smoothest, and most exclusive leather, that's aniline, our most natural product. It's only given a gentle surface treatment to withstand dirt. All in all, aniline is bare, with its natural beauty retained and exposed. Signs of life, such as creases, fat lines, grain differences, insect bites and small healed wounds, guarantee the finest quality and authenticity.



01022



33072



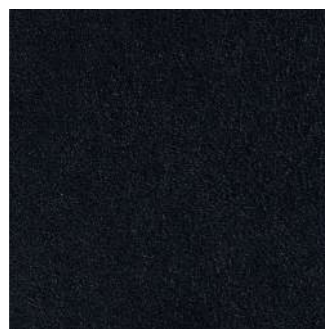
44027



91106



93104



99092

TECHNICAL INFORMATION

Composition: 100% Leather, Liftfastness 3 (ISO 105-B02), Wet-rubbing 20/4 (ISO 11640), Dry-rubbing 50/4 (ISO 11640), Sweat 20/4 (ISO 11640), Tear-strength 20 N (DIN 53329-A, Thickness 1.0-1.3 mm).
Certificates: EN 1021 - 1,2

Please note that colours displayed may vary slightly from the actual product. Therefore, we recommend requesting samples before ordering.

LEATHER ELMONUBUCK

BY ELMO

Elmonubuck has a grain which varies in structure and offers outstanding comfort. It is an aniline leather with all the distinct features of the natural hide. All in all, aniline is bare, with its natural beauty retained and exposed. Signs of life, such as creases, fat lines, grain differences, insect bites and small healed wounds, guarantee the finest quality and authenticity.



08036



11035



22029



33073



99111

TECHNICAL INFORMATION

Composition: 100% Leather, Lifgtfastness 3 (ISO 105-B02), Wet-rubbing 20/3 (ISO 11640), Dry-rubbing 50/4 (ISO 11640), Tear-strength 20 N (DIN 53329-A), Thickness 1.3-1.5 mm
Certificates: EN 1021 - 1,2

Please note that colours displayed may vary slightly from the actual product. Therefore, we recommend requesting samples before ordering.



LEATHER KAIROS

BY MASTROTTO

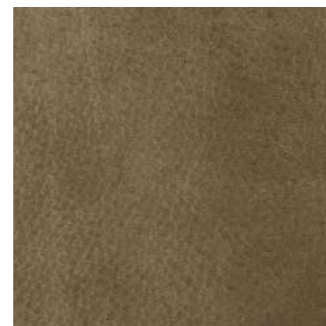
Bovine of European origin in Nabuk finishing, natural grain. This leather has a grain which varies in structure and offers outstanding comfort. A hide is selected at random from every batch of finished leather. The average size of each skin is around 5.0 sqm. Thickness 1.2 – 1.4 mm. Chrome tannage. Aniline dyed, finished with high quality oils. Suede look, soft and velvet touch. The possible presence of any imperfections testify the authenticity and the natural look of pure aniline leather.



CHALK
1705



DOESKIN
1716



CAQUI
1701



CHOCOLATE FOREST



CONCRETE
1706



CANGAROO
1719



ELEFANT
1715



VISION
1720

TECHNICAL INFORMATION

Composition: 100% Leather, Tear strength - single edge tear: UNI EN ISO 3377-1, Measurement Unit N, Guaranteed ≥ 20
Colour fastness to rubbing - Dry 50 Cycles: UNI EN ISO 11640:1998, Measurement Unit - Grey Scale, Guaranteed ≥ 3
Colour fastness to rubbing - Wet 10 Cycles: UNI EN ISO 11640:1998, Measurement Unit - Grey Scale, Guaranteed ≥ 3
Color fastness to artificial light - Exposition energy 16.000 kJ/sqm: UNI EN ISO 105 B02 (MET. 5), Measurement Unit - Grey Scale, Guaranteed ≥ 2 , Burning behaviour to cigarette and match flame: BS EN 1021-1-2 : 2006, BS 5852:1979, Guaranteed Pass

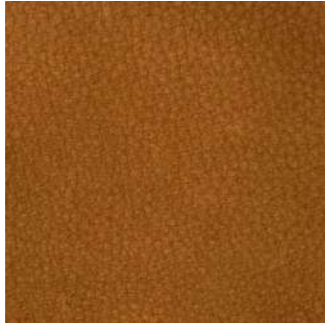
Please note that colours displayed may vary slightly from the actual product. Therefore, we recommend requesting samples before ordering.

LEATHER KAIROS

BY MASTROTTO



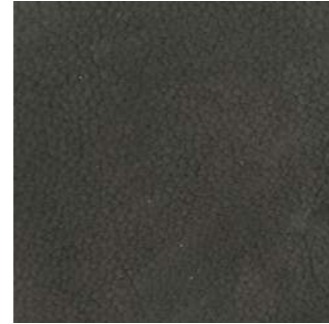
CARAMEL



CUOIO



ARDESIA



EMATITE



GRAFITE



PLOMO
1710

TECHNICAL INFORMATION

Composition: 100% Leather, Tear strength - single edge tear: UNI EN ISO 3377-1, Measurement Unit N, Guaranteed ≥ 20
Colour fastness to rubbing - Dry 50 Cycles: UNI EN ISO 11640:1998, Measurement Unit - Grey Scale, Guaranteed ≥ 3
Colour fastness to rubbing - Wet 10 Cycles: UNI EN ISO 11640:1998, Measurement Unit - Grey Scale, Guaranteed ≥ 3
Color fastness to artificial light - Exposition energy 16.000 kJ/sqm: UNI EN ISO 105 B02 (MET. 5), Measurement Unit - Grey Scale, Guaranteed ≥ 2 , Burning behaviour to cigarette and match flame: BS EN 1021-1-2 : 2006, BS 5852:1979, Guaranteed Pass

Please note that colours displayed may vary slightly from the actual product. Therefore, we recommend requesting samples before ordering.



LEATHER ORGANIC

BY MASTROTTO

Aniline cowhide 100% leather, produced by an accurate metal-free organic tanning process, made on bullskins of European origin. The retannage is done with tannins, the leather is vacuum dried and finished with waxes and anilines. Thickness is 1.1 – 1.3 mm. Average size is 5.0 – 5.5 sqm. The article complies with the UNI EN 15987 standard. The leather conveys uniqueness of character, the round and compact structure lends to highlighting the refinement of a silky hand, enhanced by a transparent look with soft pull-up effect.

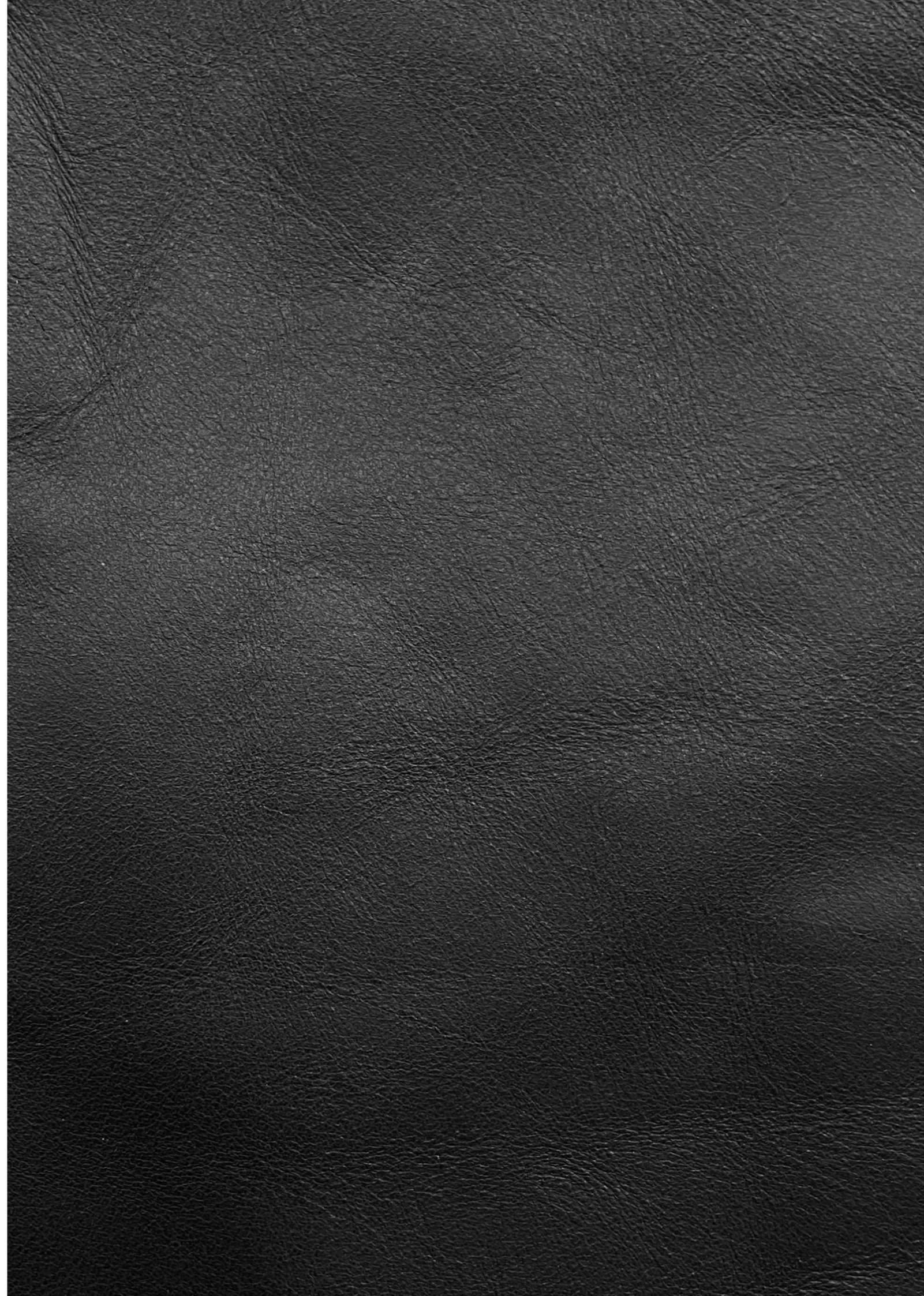


ORGANIC LEATHER INK

TECHNICAL INFORMATION

Composition: 100% Leather, Tear strength - Single edge tear: UNI EN ISO 3377-1, Measurement Unit N, Guaranteed ≥ 20
Colour fastness to rubbing - Dry 50 Cycles: UNI EN ISO 11640:1998, Measurement Unit Grey Scale, Guaranteed ≥ 3
Flexing endurance - Dry 50.000 Cycles: UNI EN ISO 5402, Guaranteed No damage
Color fastness to artificial light - Exposition energy 16.000 kj/sqm: UNI EN ISO 105 B02 (MET. 5), Measurement Unit Blue Scale, Guaranteed ≥ 2
Burning behaviour: CAL TB-117 (2013, Sec. 1), Guaranteed Pass

Please note that colours displayed may vary slightly from the actual product. Therefore, we recommend requesting samples before ordering.



LEATHER SEQUOIA

BY MASTROTTO

Bovine of European origin, with a distressed vintage effect. Thickness 0.9 – 1.1 mm. Average surface 4.8 – 5.0 sqm. Through dyed. This high quality article is obtained starting with nubuck leather, which is slightly levelled with aniline and hand rubbed to give an aged effect. It has a very warm and silky feel.



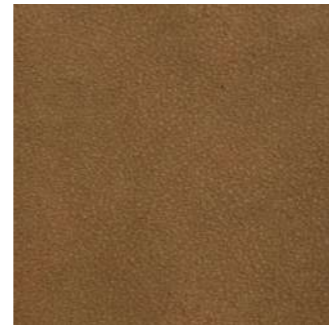
PAPYRUS



CAMEL



TERRA



ANTILOPE



BIRCH



CIMENT



PIETRA

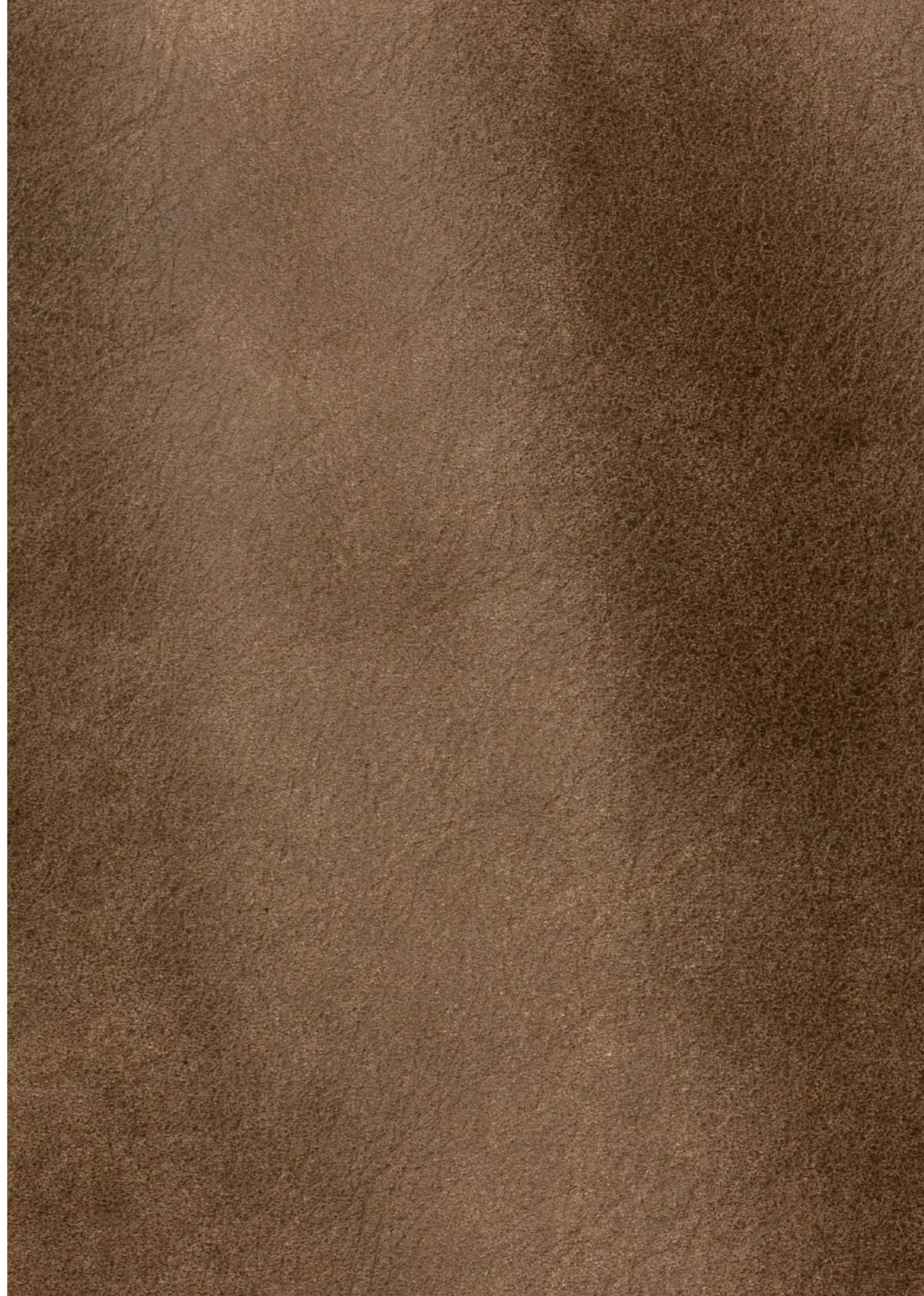


CARBONE

TECHNICAL INFORMATION

Composition: 100% Leather, Tear strength - Single edge tear: UNI EN ISO 3377-1, Measurement Unit N, Guaranteed ≥ 20
Colour fastness to rubbing - Dry 50 Cycles: UNI EN ISO 11640:1998, Measurement Unit Grey Scale, Guaranteed $\geq 3/4$
Colour fastness to rubbing - Wet 20 Cycles: UNI EN ISO 11640:1998, Measurement Unit Grey Scale, Guaranteed ≥ 3
Colour fastness to rubbing - Sweat 20 Cycles: UNI EN ISO 11640:1998 ISO 11641 pH8, Measurement Unit Grey Scale, Guaranteed ≥ 3 ,
Flexing endurance - Dry 50.000 Cycles: UNI EN ISO 5402, Guaranteed No damage
Color fastness to artificial light - Exposition energy 16.000 kJ/sqm: UNI EN ISO 105 B02 (MET. 5), Measurement Unit Blue Scale, Guaranteed ≥ 3 , Burning behaviour to cigarette and match flame: BS 5852:1979 BS EN 1021-1-2:2006, Guaranteed Pass

Please note that colours displayed may vary slightly from the actual product. Therefore, we recommend requesting samples before ordering.



LEATHER SEQUOIA

BY MASTROTTO



GRIGIO



ANTRACITE

TECHNICAL INFORMATION

Composition: 100% Leather, Tear strength - Single edge tear: UNI EN ISO 3377-1, Measurement Unit N, Guaranteed ≥ 20
Colour fastness to rubbing - Dry 50 Cycles: UNI EN ISO 11640:1998, Measurement Unit Grey Scale, Guaranteed $\geq 3/4$
Colour fastness to rubbing - Wet 20 Cycles: UNI EN ISO 11640:1998, Measurement Unit Grey Scale, Guaranteed ≥ 3
Colour fastness to rubbing - Sweat 20 Cycles: UNI EN ISO 11640:1998 ISO 11641 pH8, Measurement Unit Grey Scale, Guaranteed ≥ 3
Flexing endurance - Dry 50.000 Cycles: UNI EN ISO 5402, Guaranteed No damage
Color fastness to artificial light - Exposition energy 16.000 kJ/sqm: UNI EN ISO 105 B02 (MET. 5), Measurement Unit Blue Scale, Guaranteed ≥ 3 , Burning behaviour to cigarette and match flame: BS 5852:1979 BS EN 1021-1-2:2006, Guaranteed Pass

Please note that colours displayed may vary slightly from the actual product. Therefore, we recommend requesting samples before ordering.

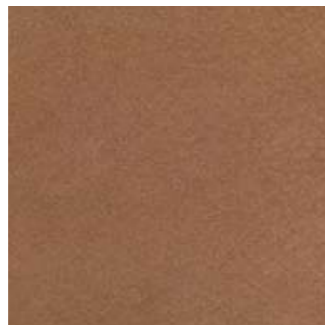
LEATHER VELVET

BY STOLTZ

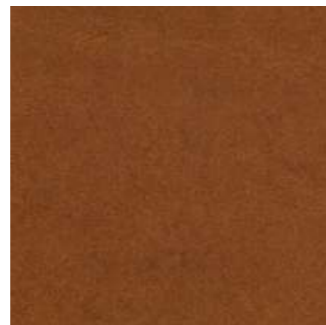
Velvet is a nubuckleather with a warm and charming look. A flat anilinhide has been lightly sanded to obtain a discrete write effect. Even at the first contact the customer is surprised by the pleasant touch.



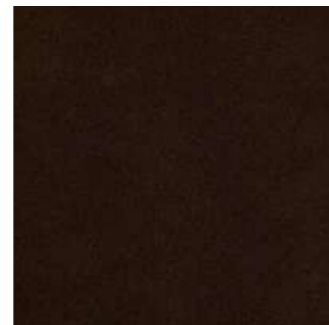
501



502



503



504



505



506



512



514

TECHNICAL INFORMATION

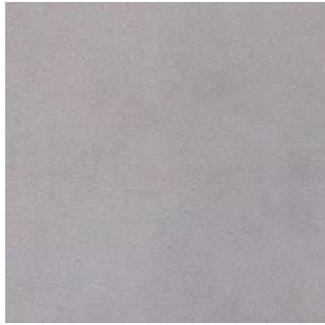
Composition: 100% Leather, Origin: South-german bullhides, Thickness: 1.2/1.4 mm, Treatment: Nubuck

Please note that colours displayed may vary slightly from the actual product. Therefore, we recommend requesting samples before ordering.

LEATHER VELVET



515



517

TECHNICAL INFORMATION

Composition: 100% Leather, Origin: South-german bullhides, Thickness: 1.2/1.4 mm, Treatment: Nubuck

Please note that colours displayed may vary slightly from the actual product. Therefore, we recommend requesting samples before ordering.



CONTACT THE **_EDITIONS**

VISITORS & SHOWROOM

BOON_ROOM
9 Rue de Lesdiguières
75004 Paris France

ENQUIRES

Info@boon-editions.com
info@boon-room.com

+33 (0)9 67498780

HEADQUARTERS

BOON_EDITIONS
3 Boulevard de Belleville
75011 Paris France

TVA n° FR26897715637

www.boon-editions.com | www.boon-room.com

All rights reserved © BOON_ORIGIN SAS Group.

